

**Full Breakdown**

---

**CHINA MONTHLY UPDATE  
COVID-19 AND IMPACTS**

---

**OCTOBER 2021**

**BESPOKE MARKET INTELLIGENCE**

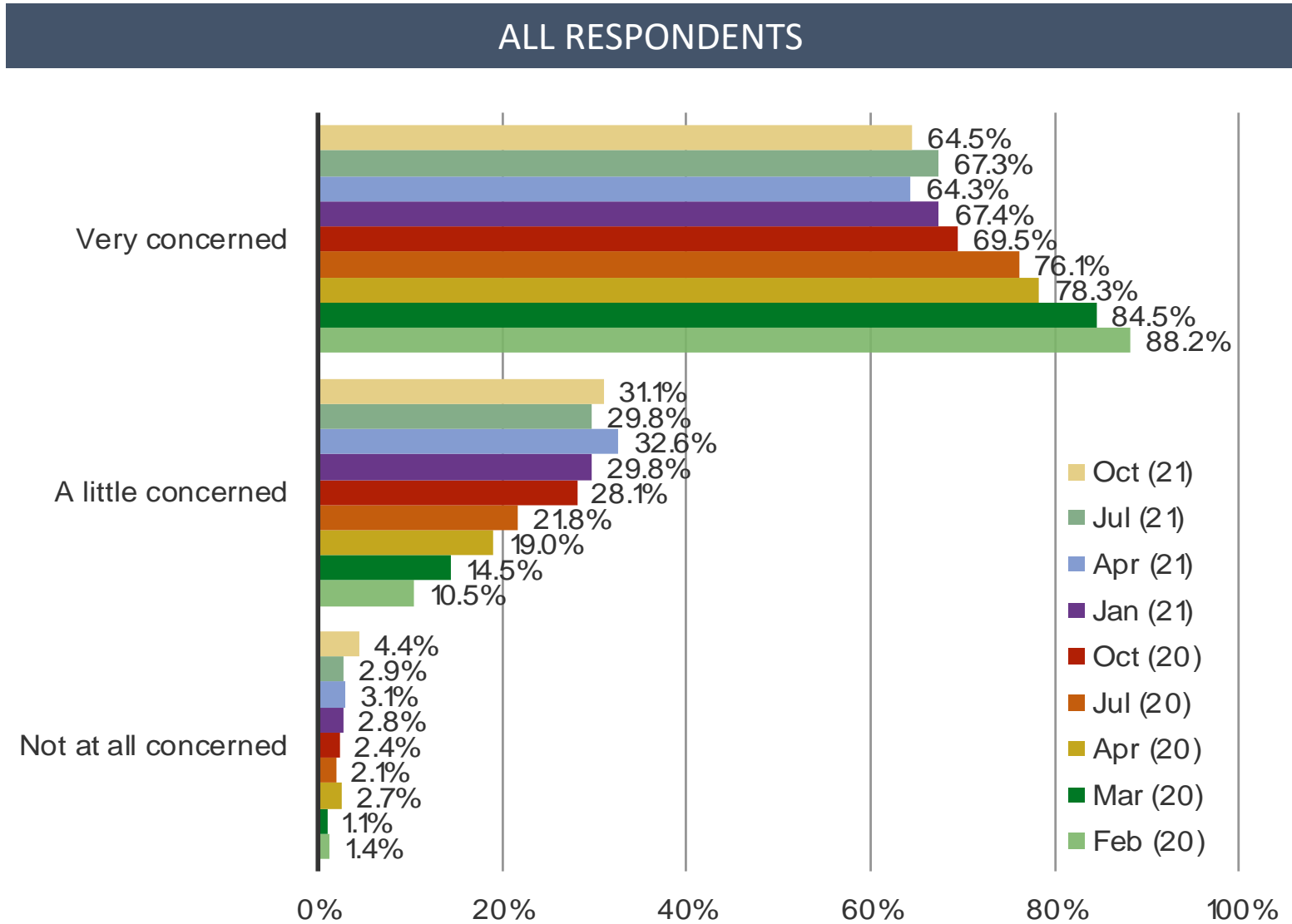
# I

---

- Covid Concerns Consistent Q/Q**
- Personal Financial Conditions and Confidence in the Economy Show Improvement**
- Sentiment related to US / China Relations Has Improved Slightly (But Still Net Negative)**
- Food Delivery App Use Moves Higher**

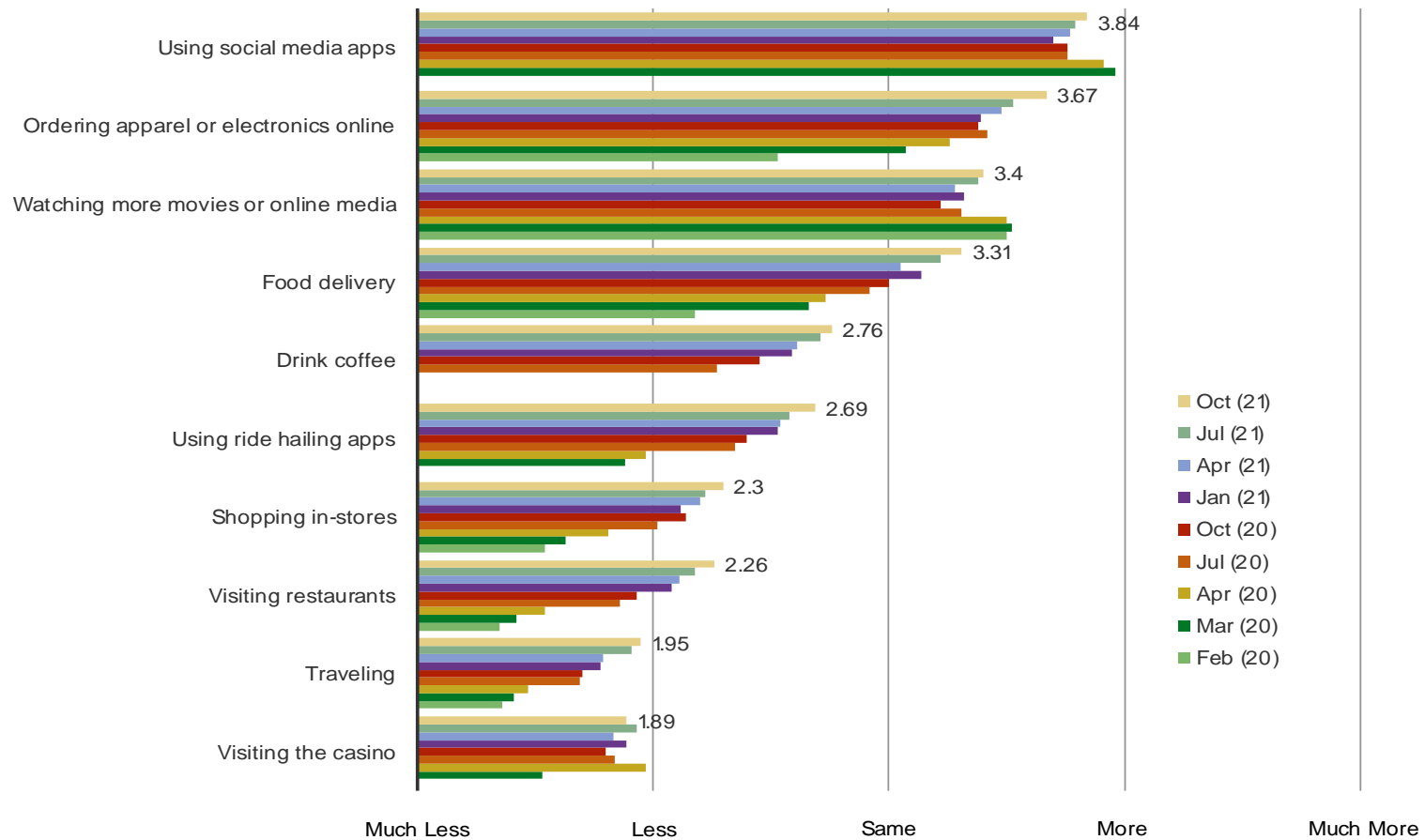


Please rate your level of concern about the Coronavirus?



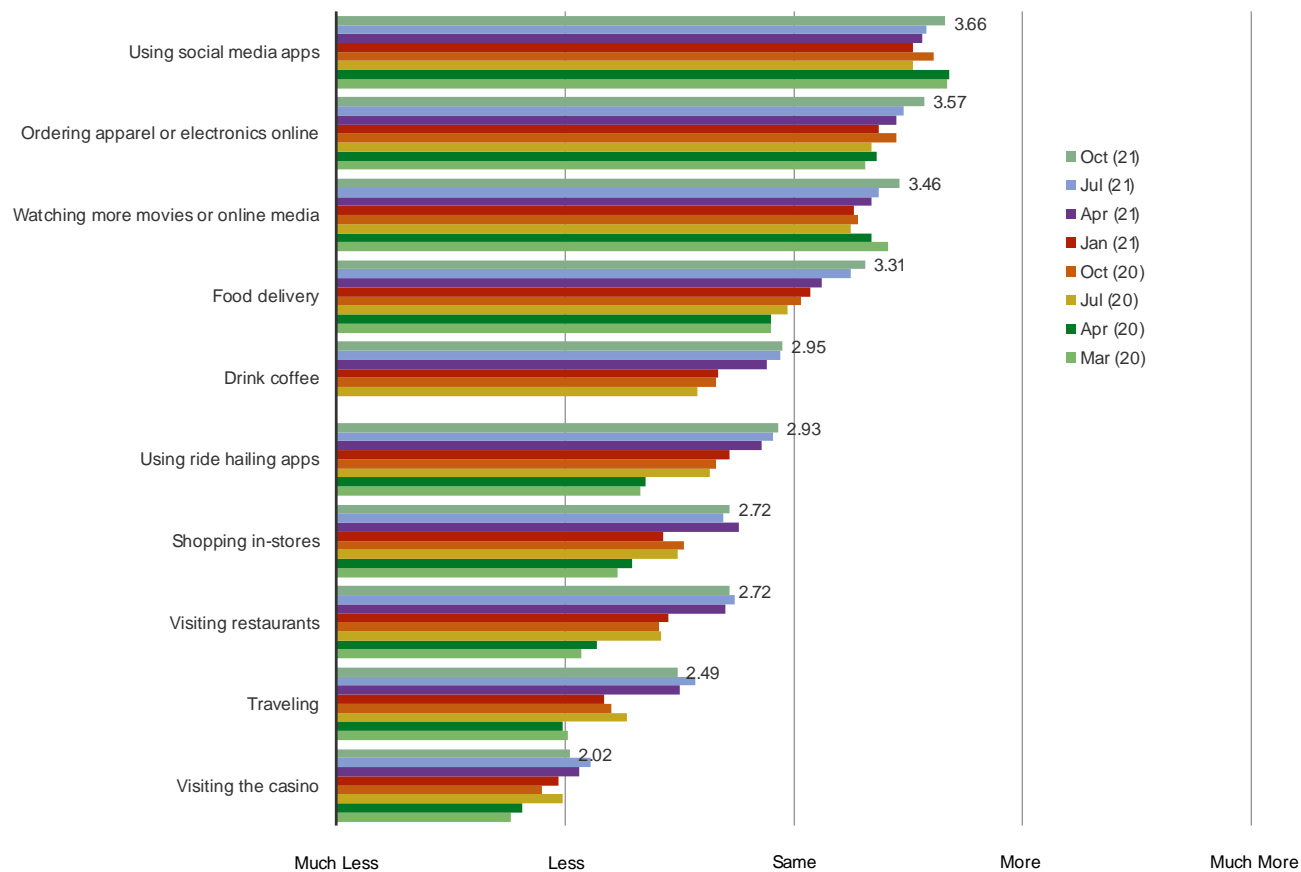
Has the Coronavirus caused you to do any of the following more or less? (Time Series)

ALL RESPONDENTS



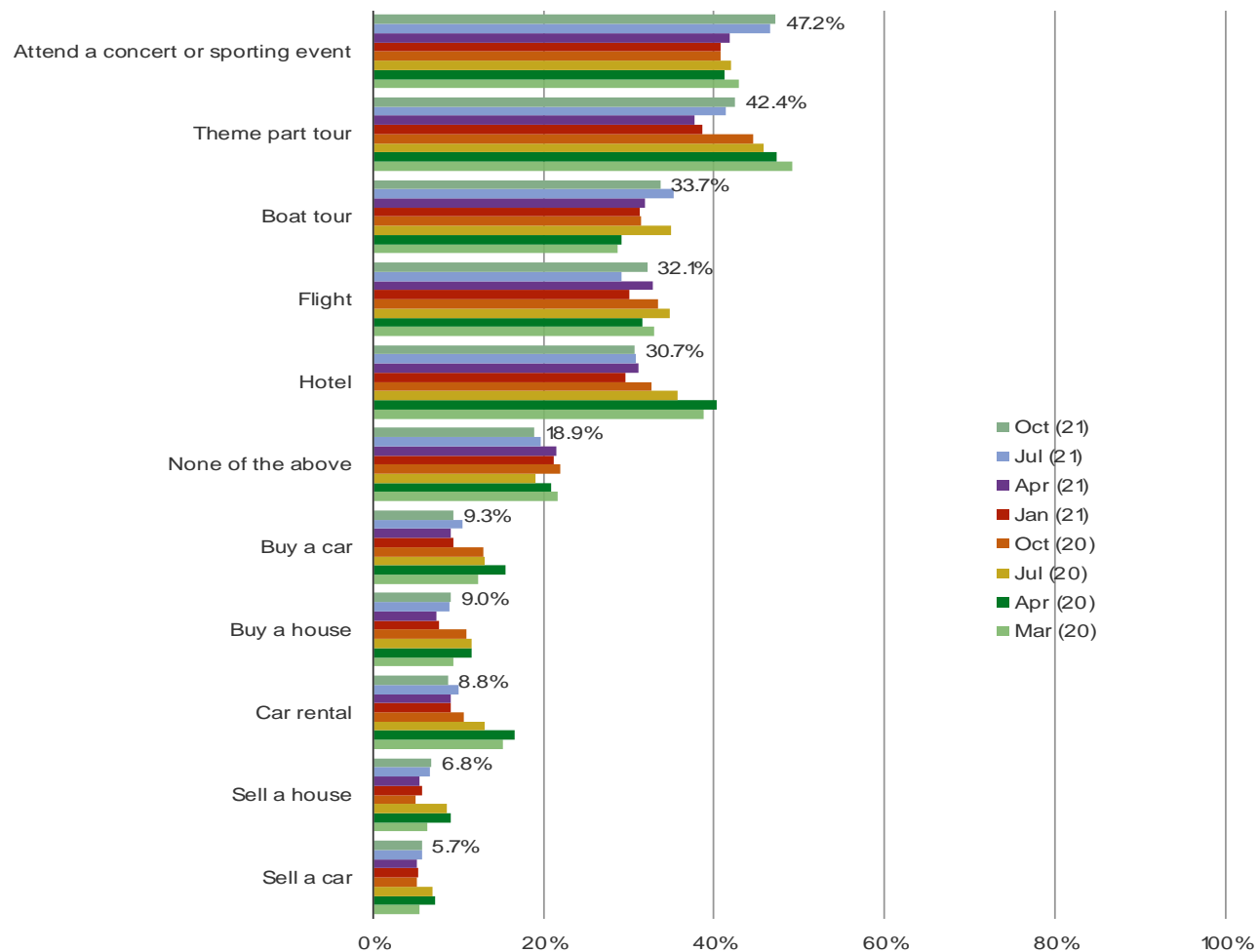
Looking ahead, will the coronavirus cause you to do the following more or less?

ALL RESPONDENTS

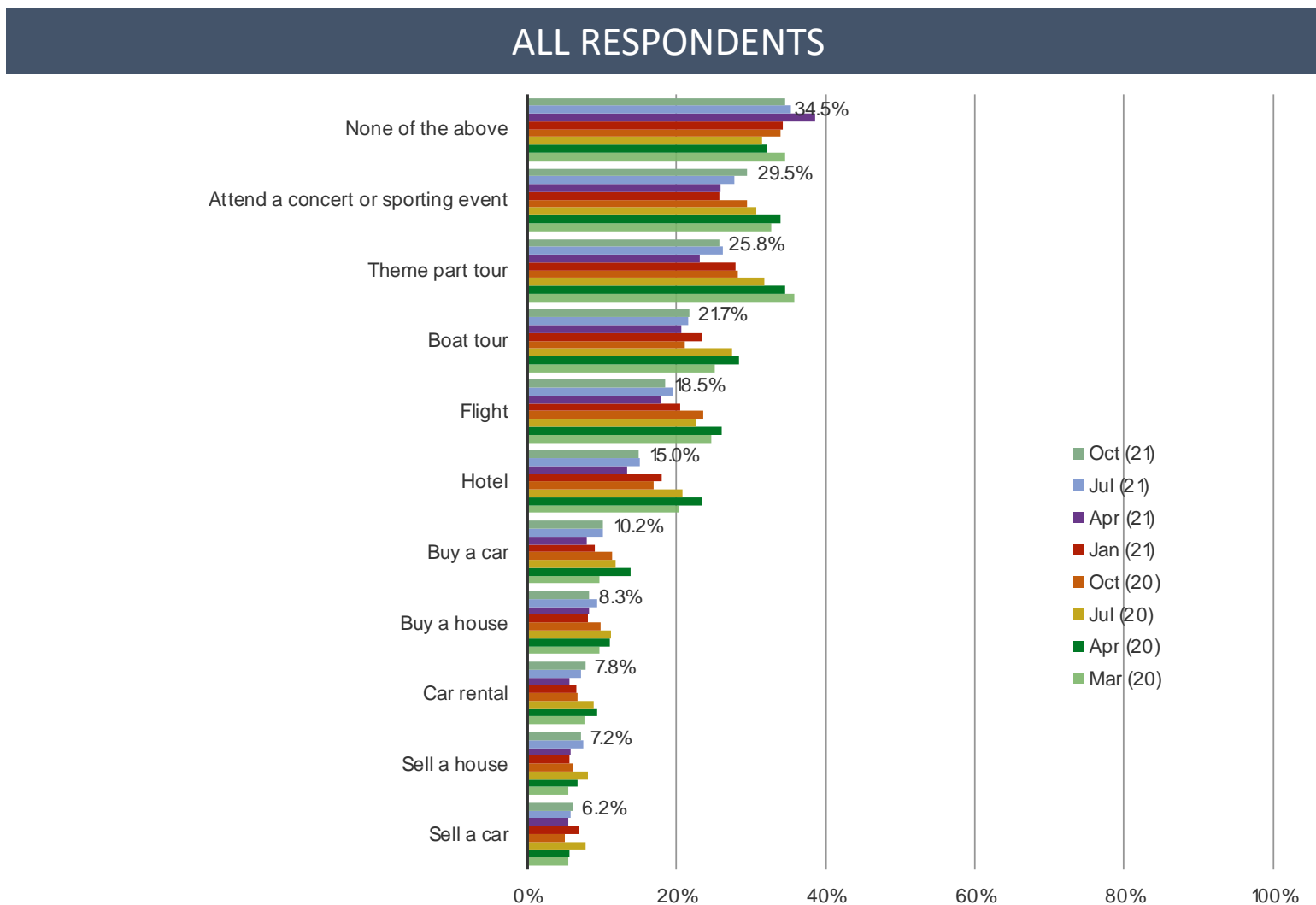


Did you cancel any of the following because of the coronavirus? (Select ALL)

ALL RESPONDENTS



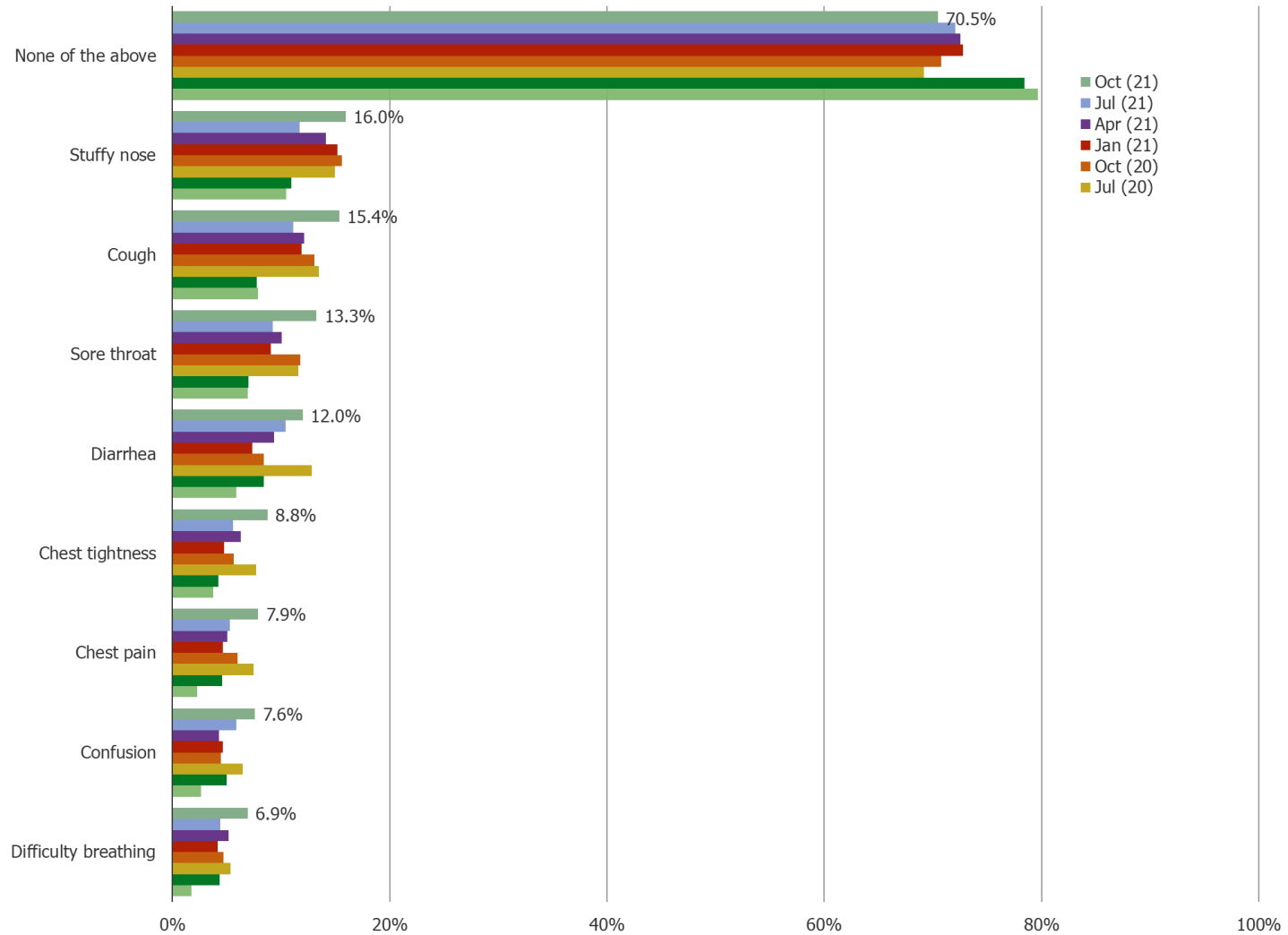
## Do you expect to delay or cancel any of the following in the next 3-6 months?



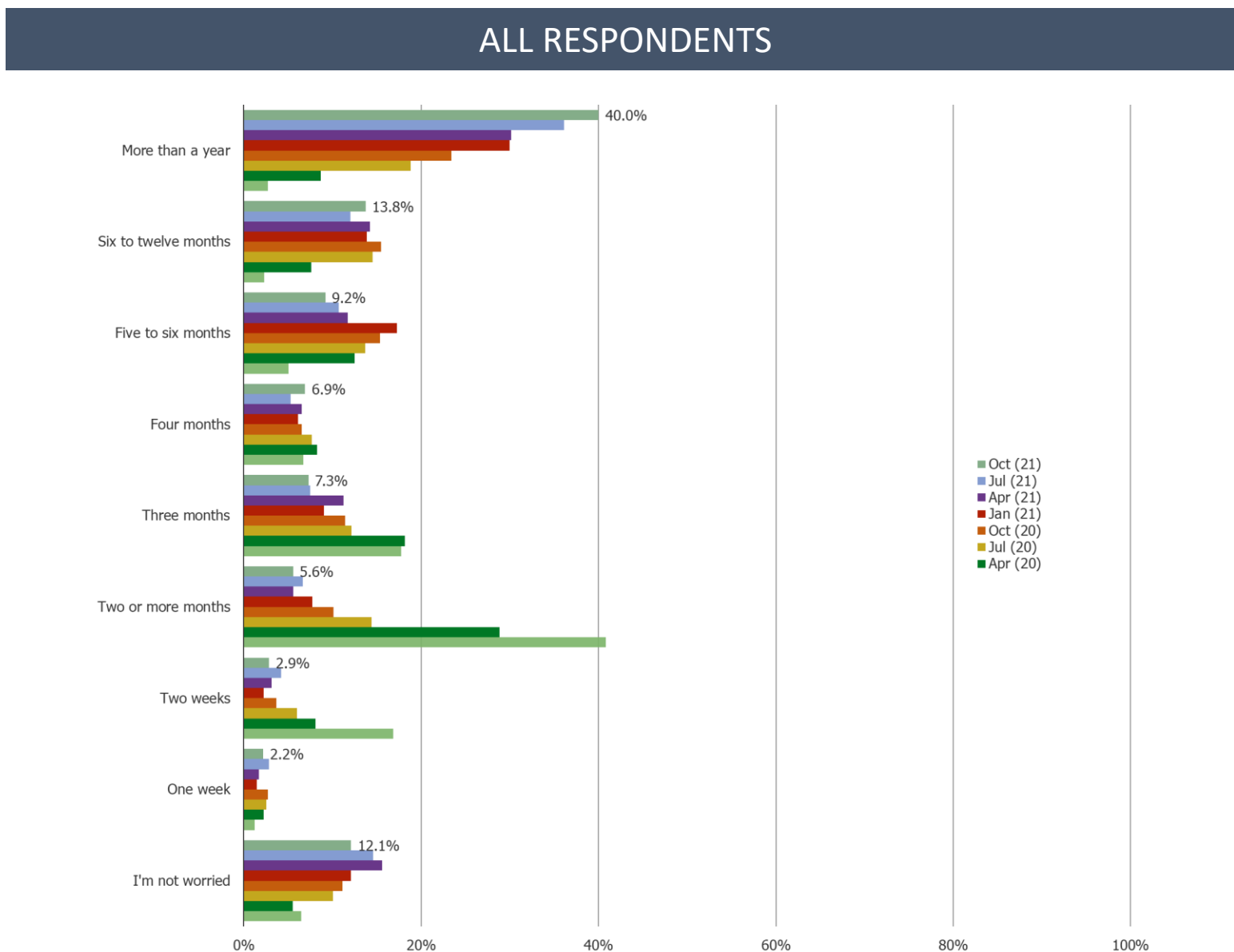


In the past three months, have you had any of the following conditions? (Select ALL)

ALL RESPONDENTS



## For how much longer do you expect the coronavirus to be a concern?



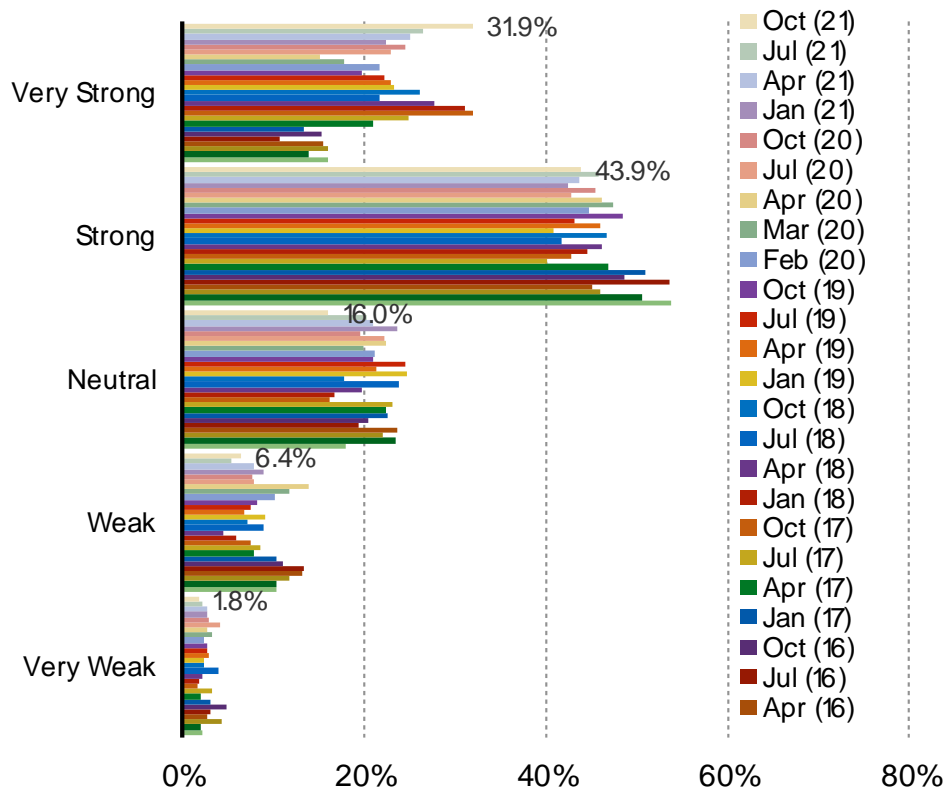
## II

---

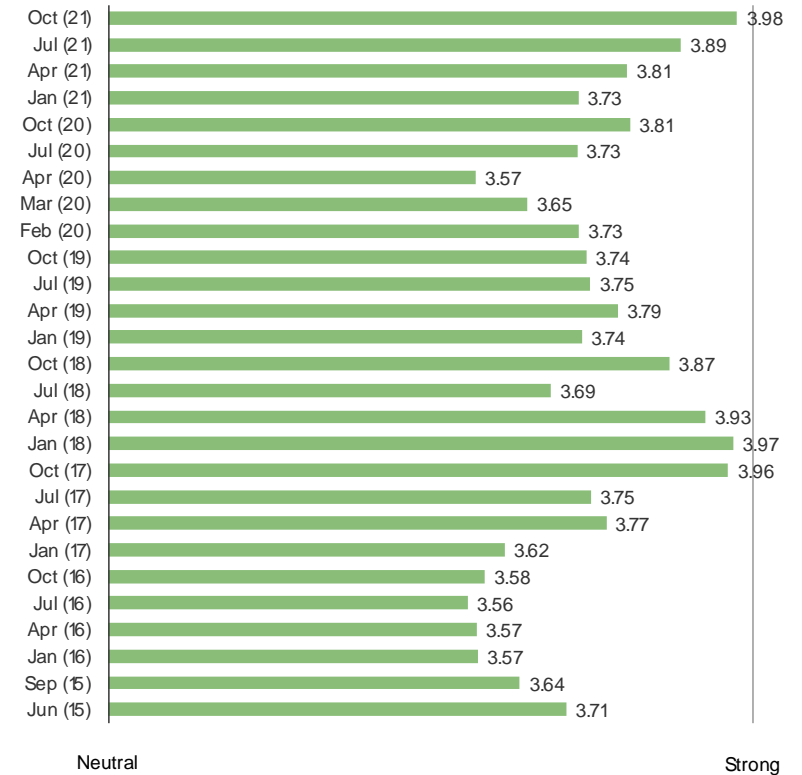
- ❑ Covid Concerns Consistent Q/Q
- ❑ Personal Financial Conditions and Confidence in the Economy Show Improvement
- ❑ Sentiment related to US / China Relations Has Improved Slightly (But Still Net Negative)
- ❑ Food Delivery App Use Moves Higher

## How confident do you currently feel about spending money?

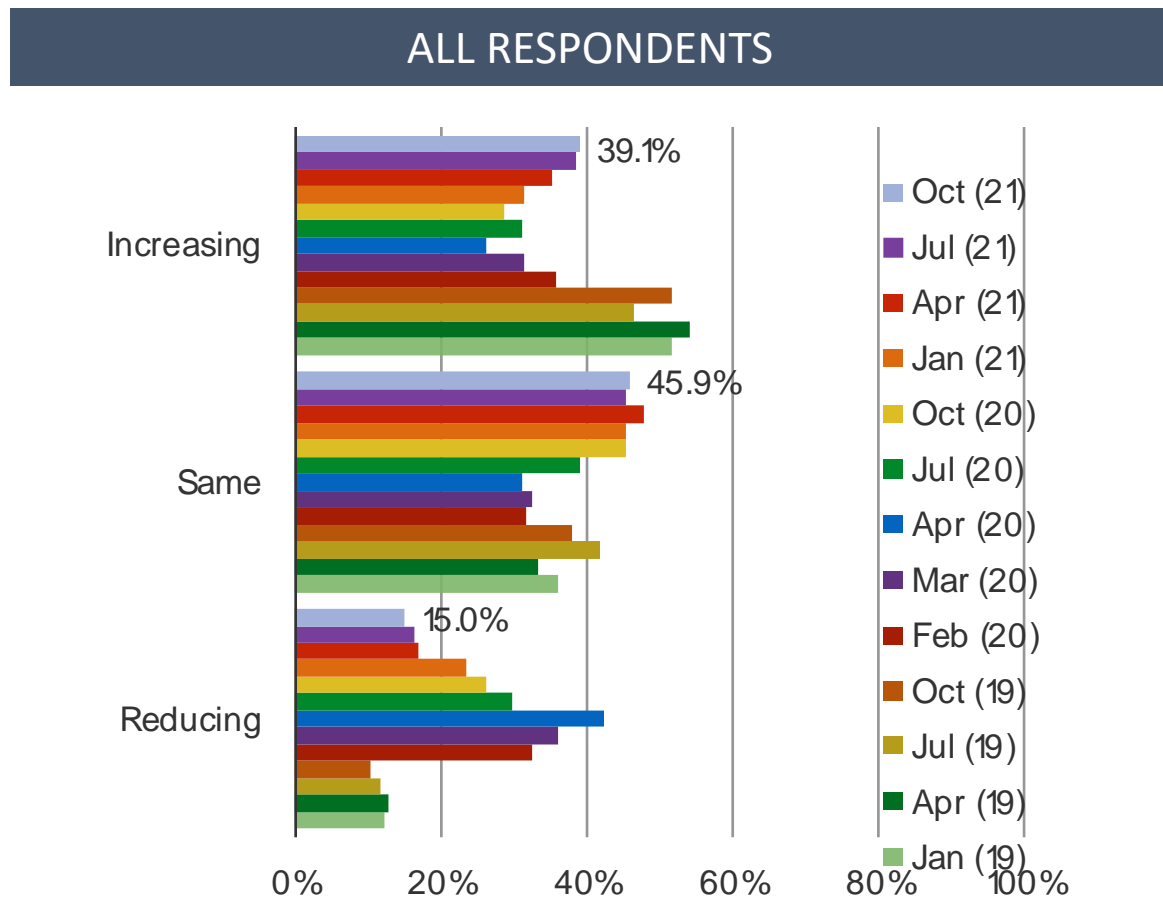
### ALL RESPONDENTS



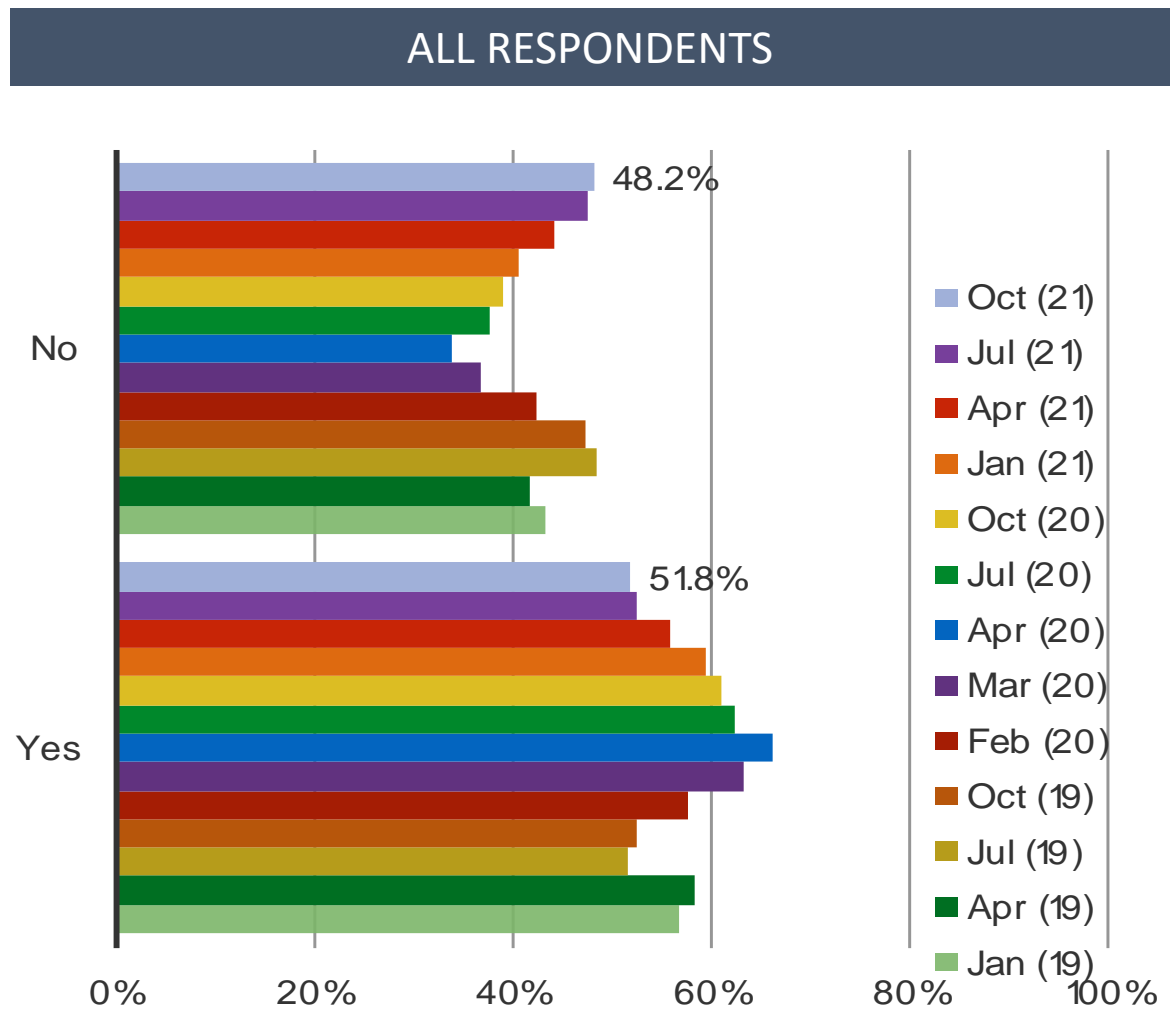
### WEIGHTED AVERAGE



## How much have you been spending recently?

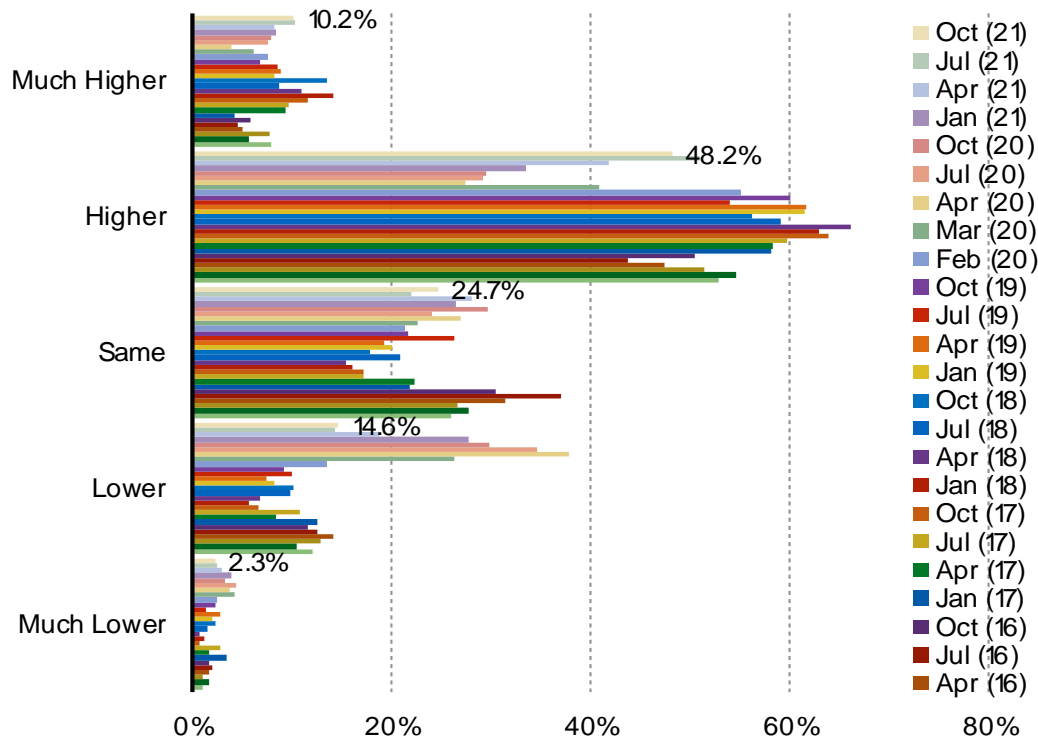


Do you want to reduce spending now?

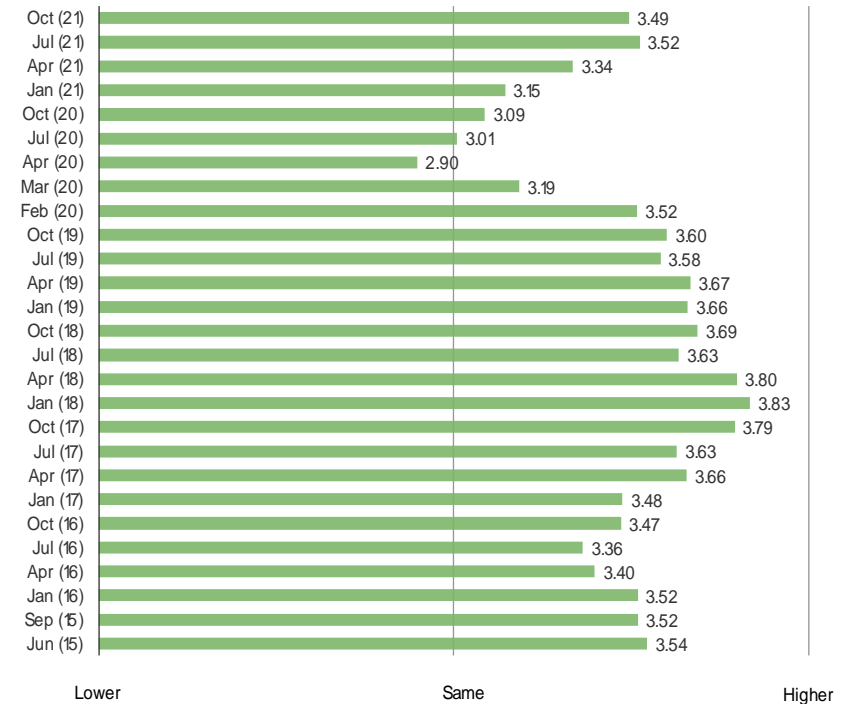


## How does your household income compare to last year?

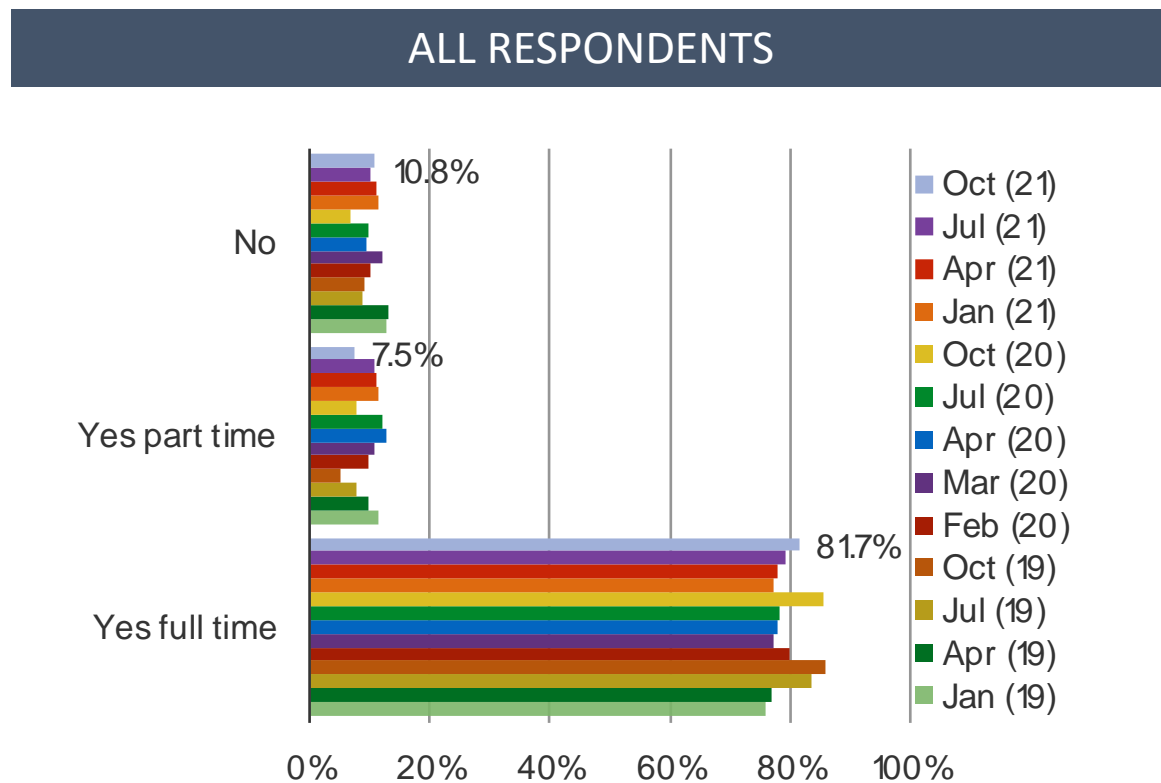
### ALL RESPONDENTS



### WEIGHTED AVERAGE



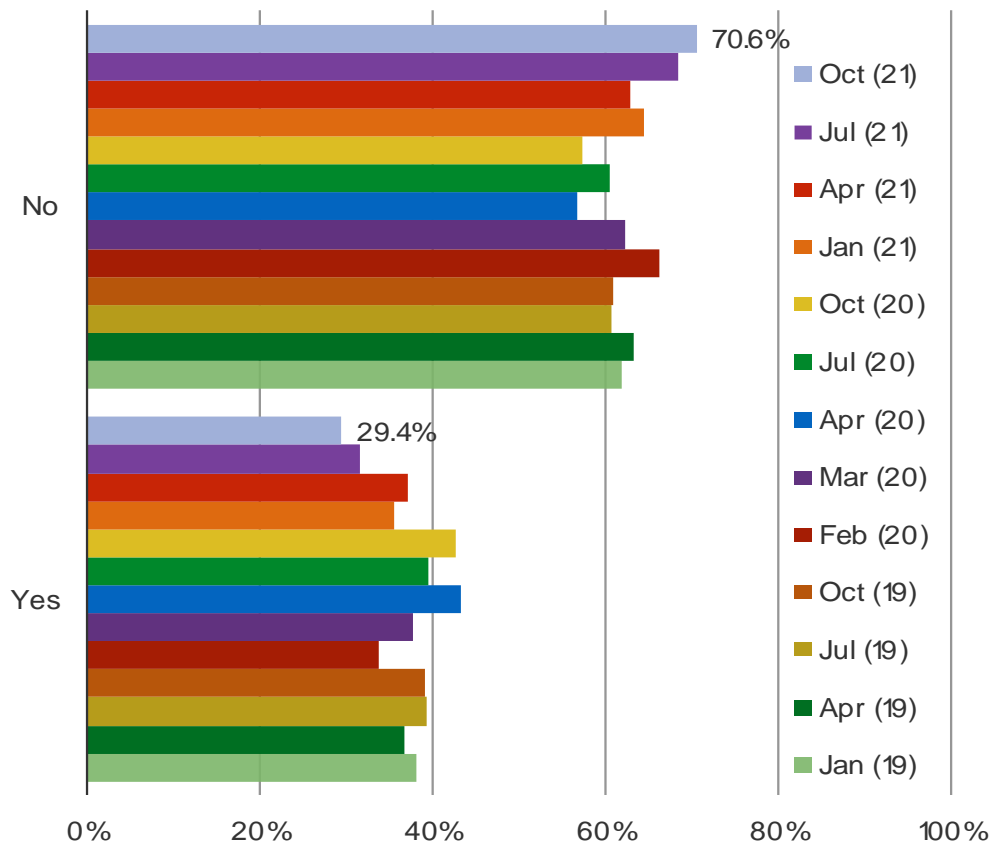
Do you have a job now?



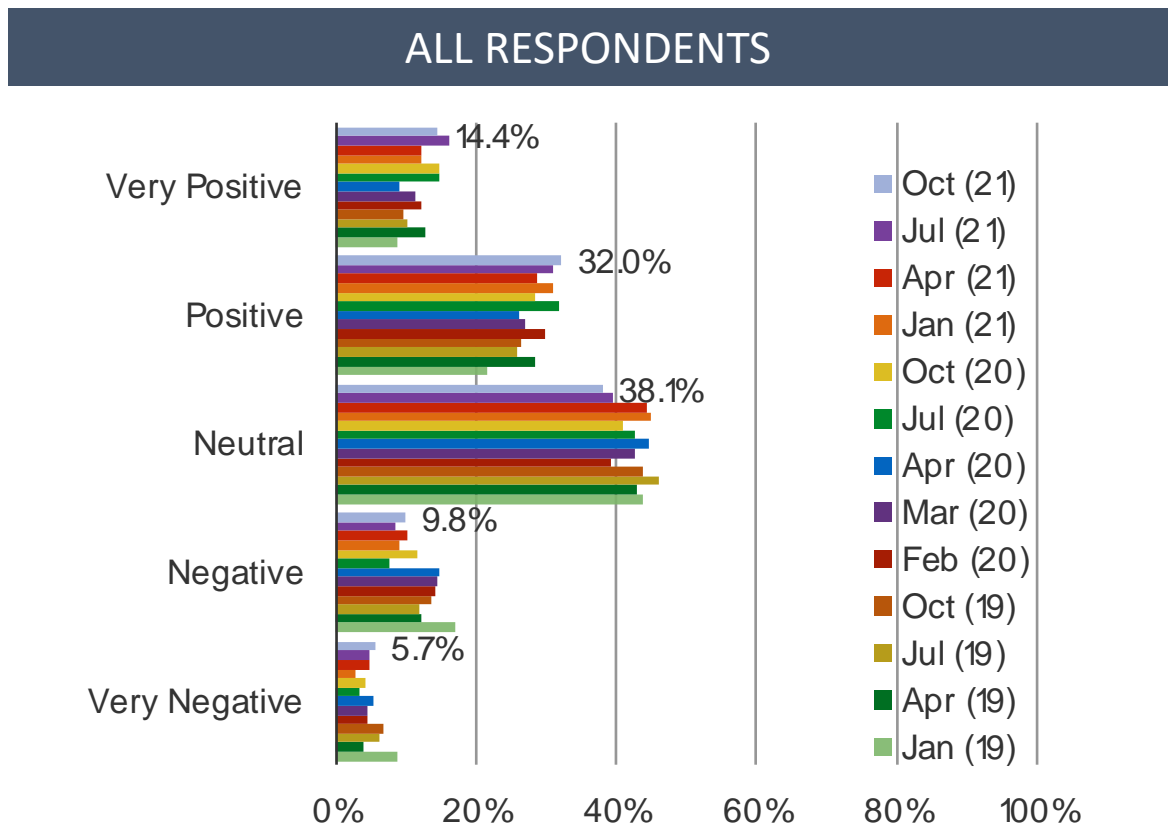


Are you worried that you will lose your job?

POSED TO RESPONDENTS WHO HAVE A JOB



## What do you think of the Chinese stock market?



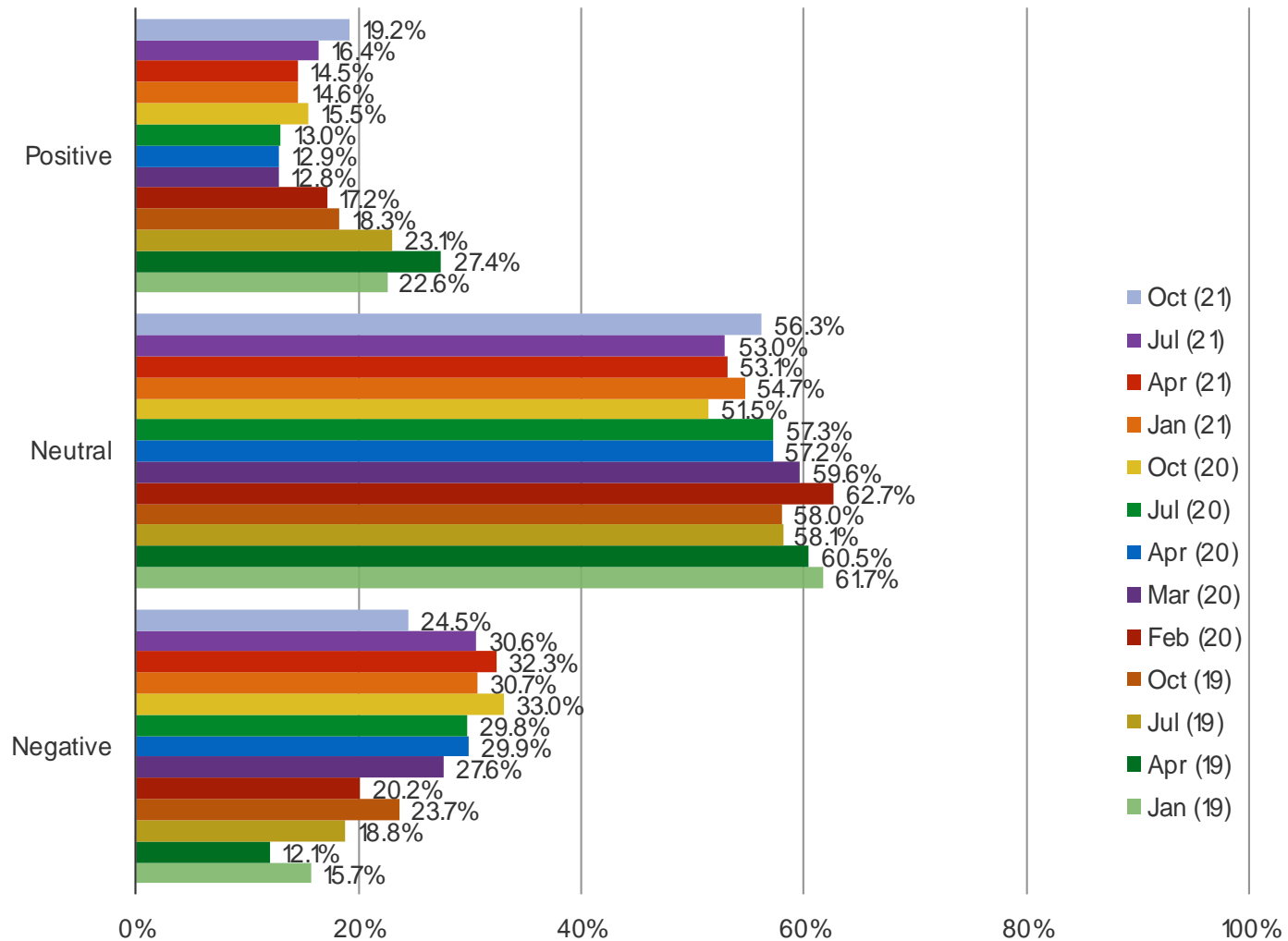
# III

---

- ❑ **Covid Concerns Consistent Q/Q**
- ❑ **Personal Financial Conditions and Confidence in the Economy Show Improvement**
- ❑ **Sentiment related to US / China Relations Has Improved Slightly (But Still Net Negative)**
- ❑ **Food Delivery App Use Moves Higher**

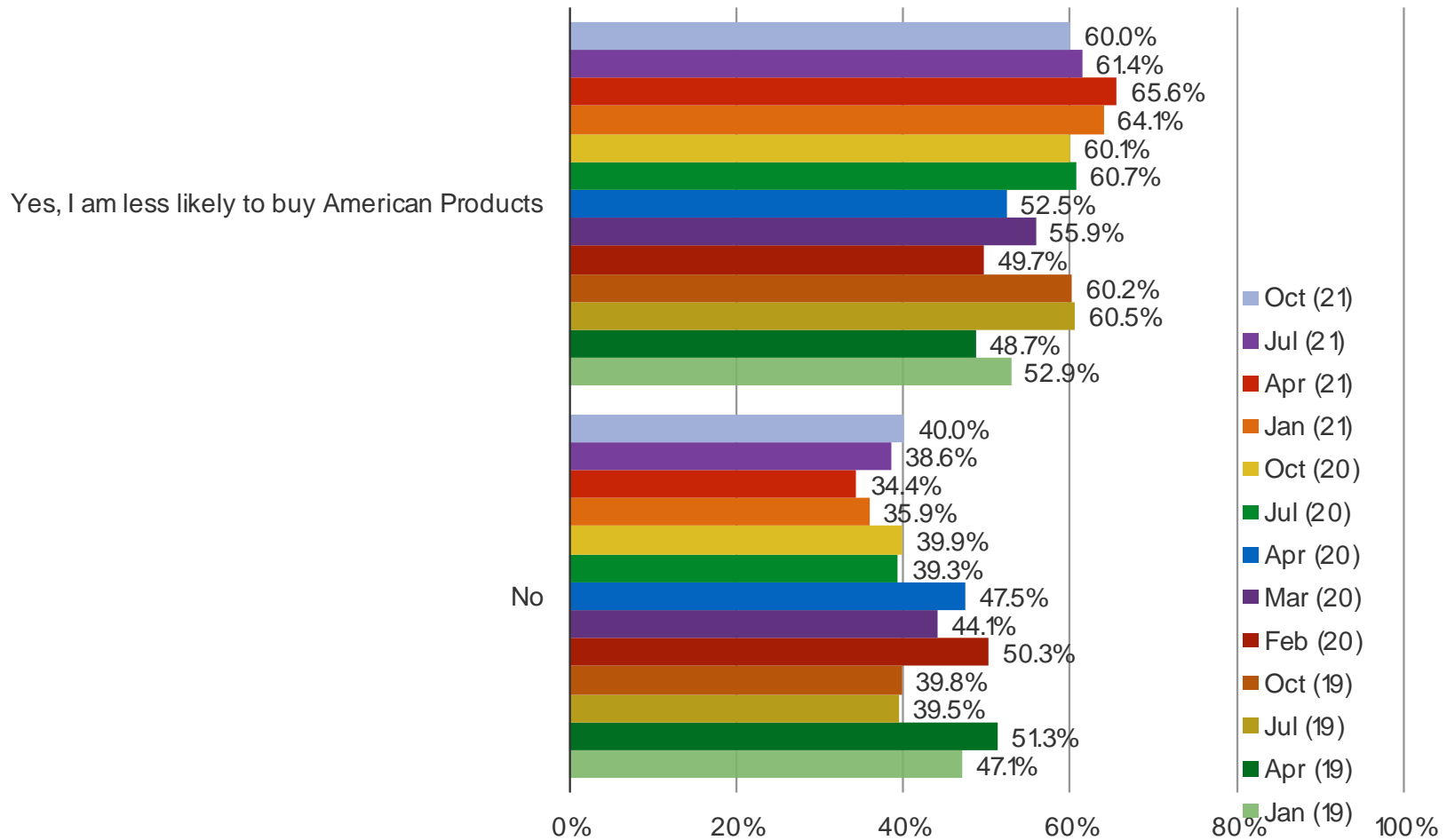
## What do you think of the relationship between China and the US?

POSED TO ALL RESPONDENTS



Because of your view on the relationship between China and the United States, are you less likely to buy American products?

POSED TO RESPONDENTS WHO HAVE A NEGATIVE VIEW ON US CHINA RELATIONS



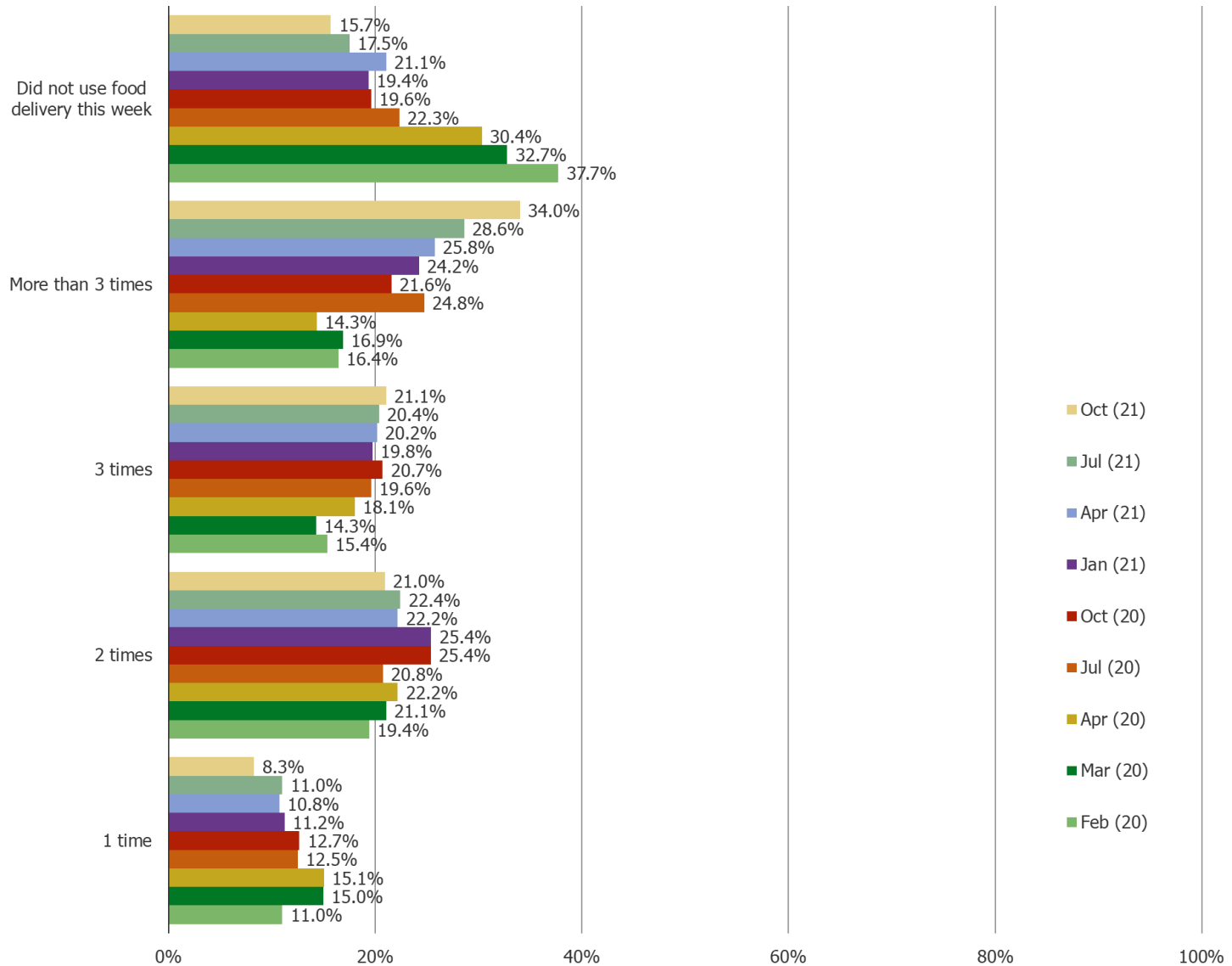
# IV

---

- ❑ **Covid Concerns Consistent Q/Q**
- ❑ **Personal Financial Conditions and Confidence in the Economy Show Improvement**
- ❑ **Sentiment related to US / China Relations Has Improved Slightly (But Still Net Negative)**
- ❑ **Food Delivery App Use Moves Higher**

How often did you order food delivery this week?

ALL RESPONDENTS



Do you plan to increase or decrease your spending on the following stores and apps?

ALL RESPONDENTS

