

Bespoke Intel

**CHINA SURVEY UPDATE
COVID-19 AND MACRO TRENDS**

JANUARY 2022

I

- Covid Concerns Steady Q/Q**
- Household Incomes and Spending Show Improvement**
- Sentiment related to US / China Relations Improves Sequentially**
- Food Delivery App Use Moves Modestly Higher**

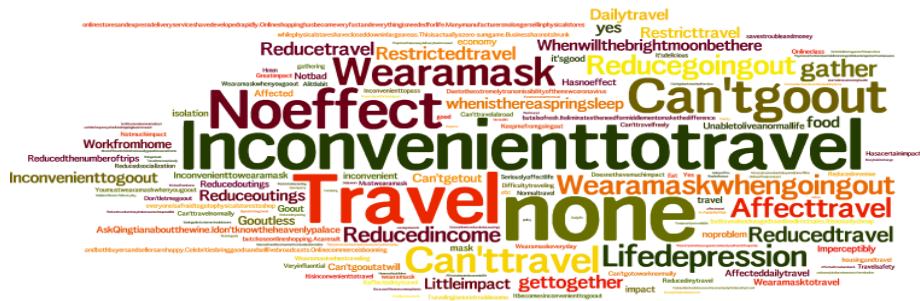
How does COVID impact your daily life?

January 2022

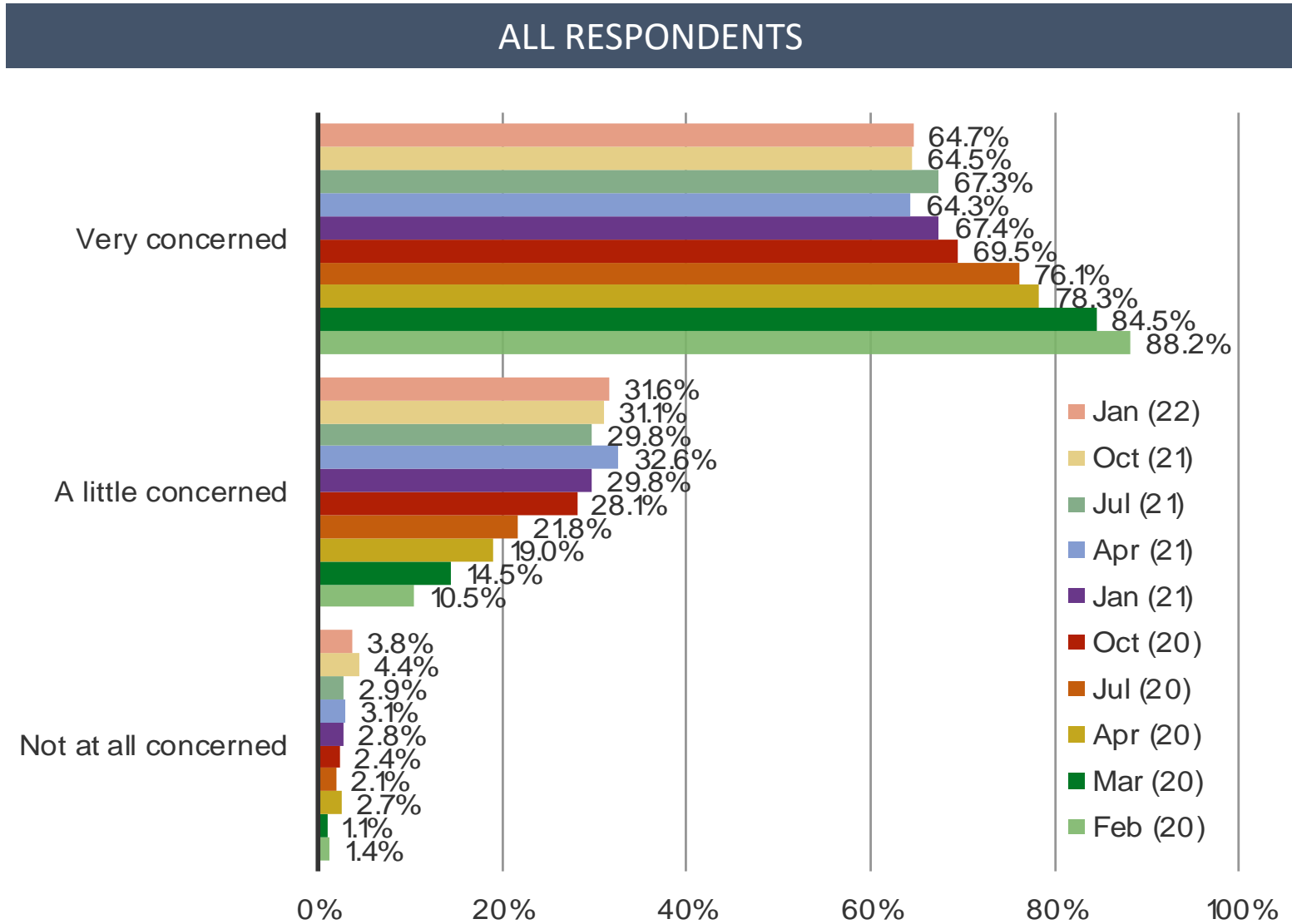


October 2021

January 2020

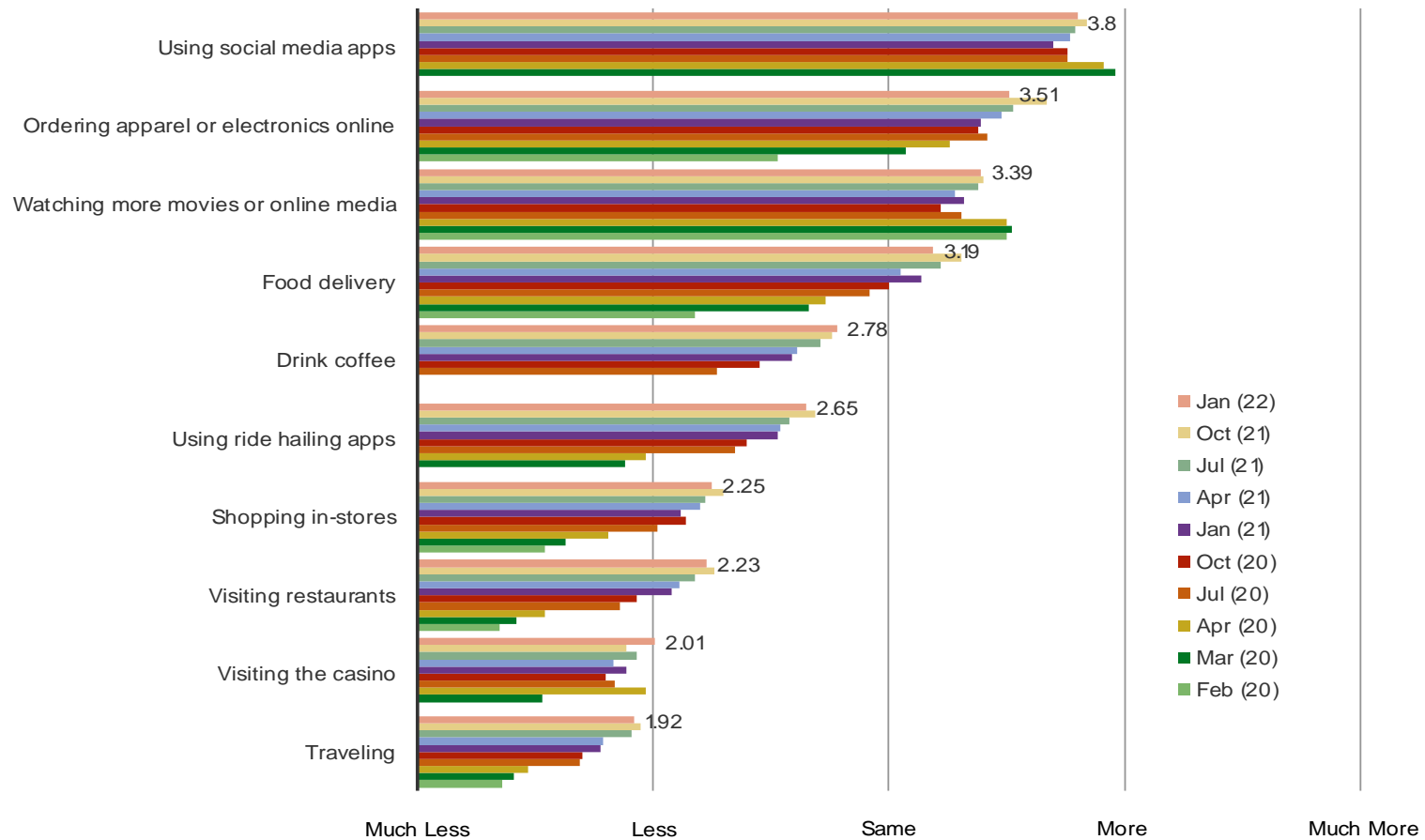


Please rate your level of concern about the Coronavirus?



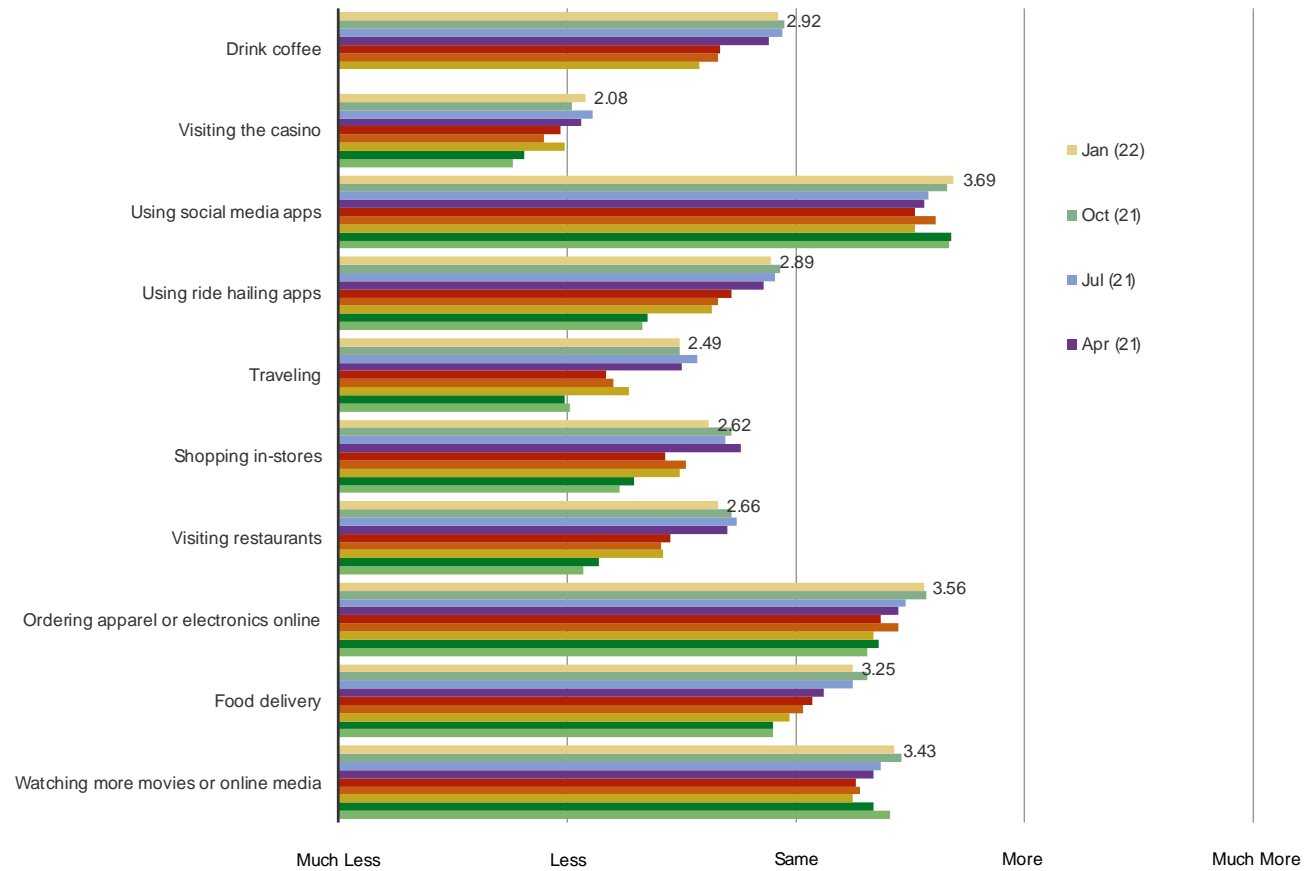
Has the Coronavirus caused you to do any of the following more or less? (Time Series)

ALL RESPONDENTS



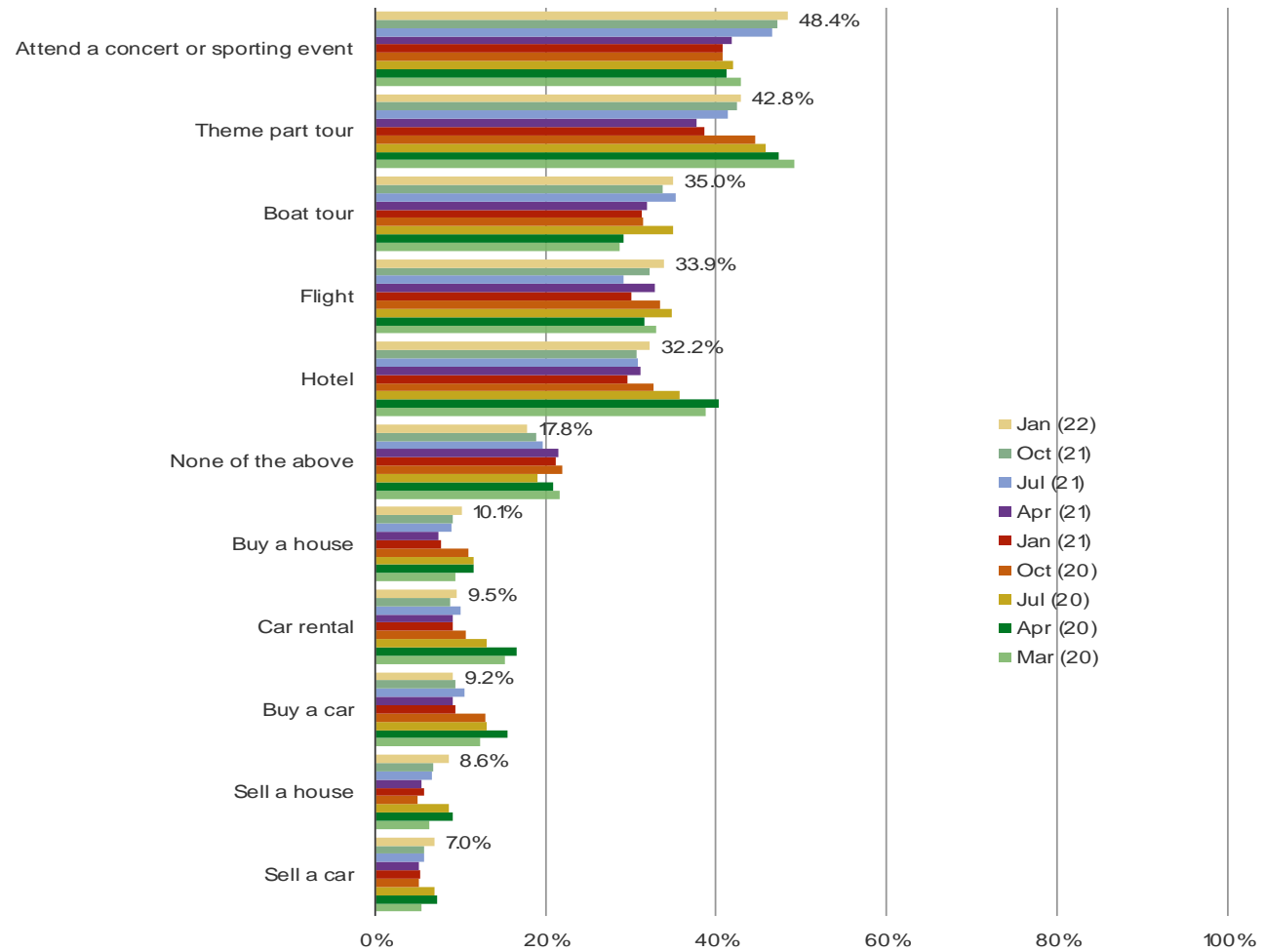
Looking ahead, will the coronavirus cause you to do the following more or less?

ALL RESPONDENTS

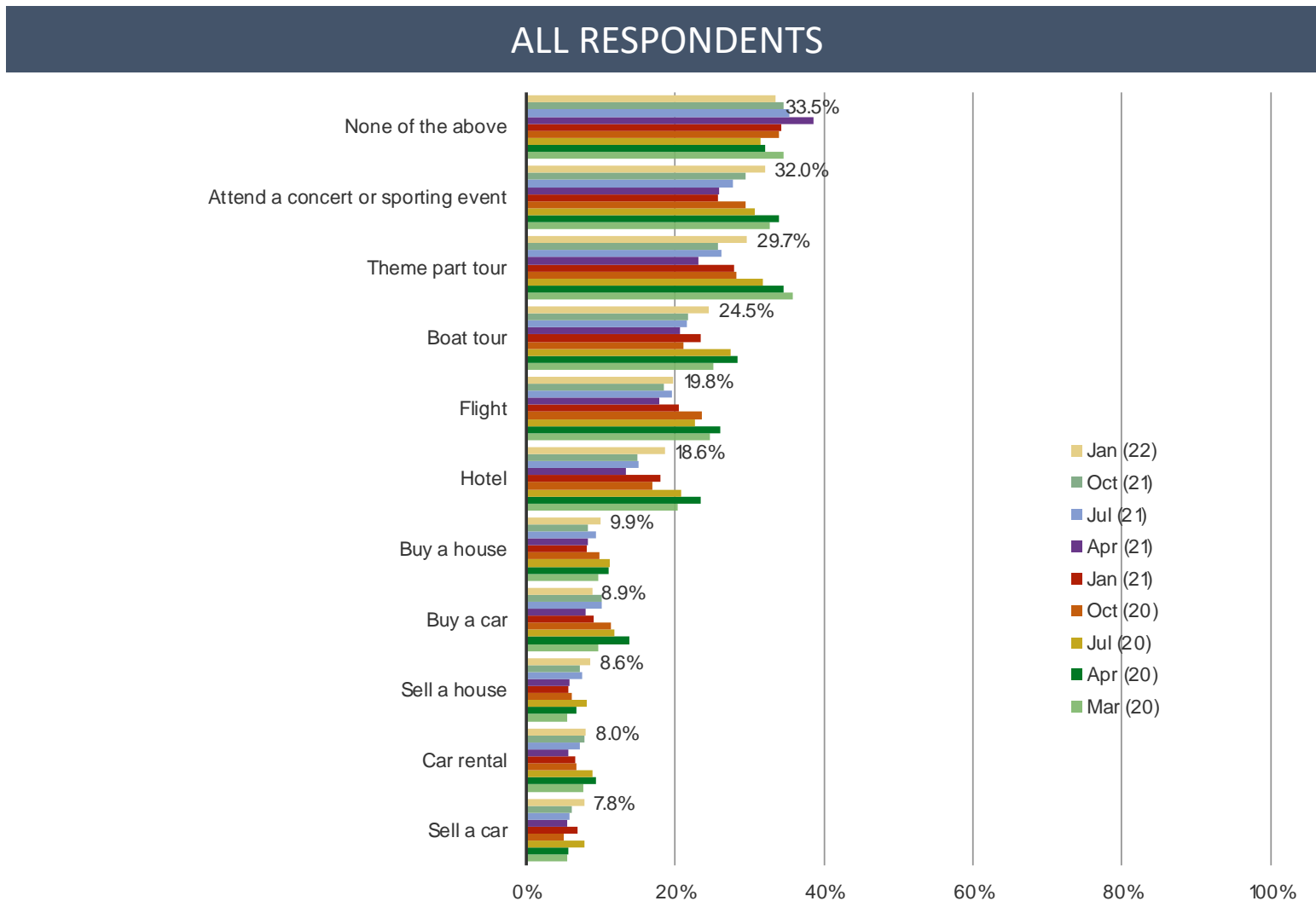


Did you cancel any of the following because of the coronavirus? (Select ALL)

ALL RESPONDENTS

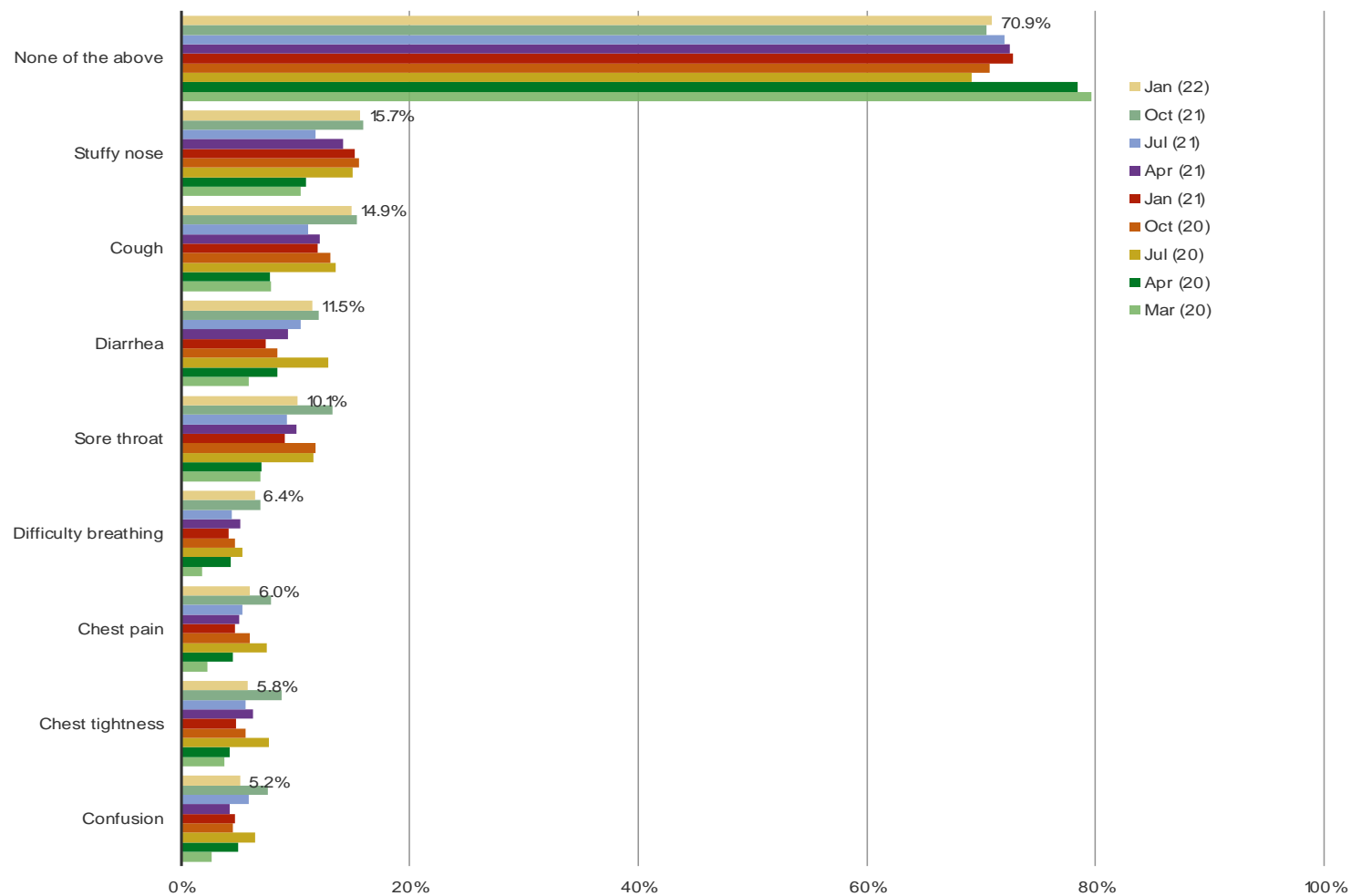


Do you expect to delay or cancel any of the following in the next 3-6 months?



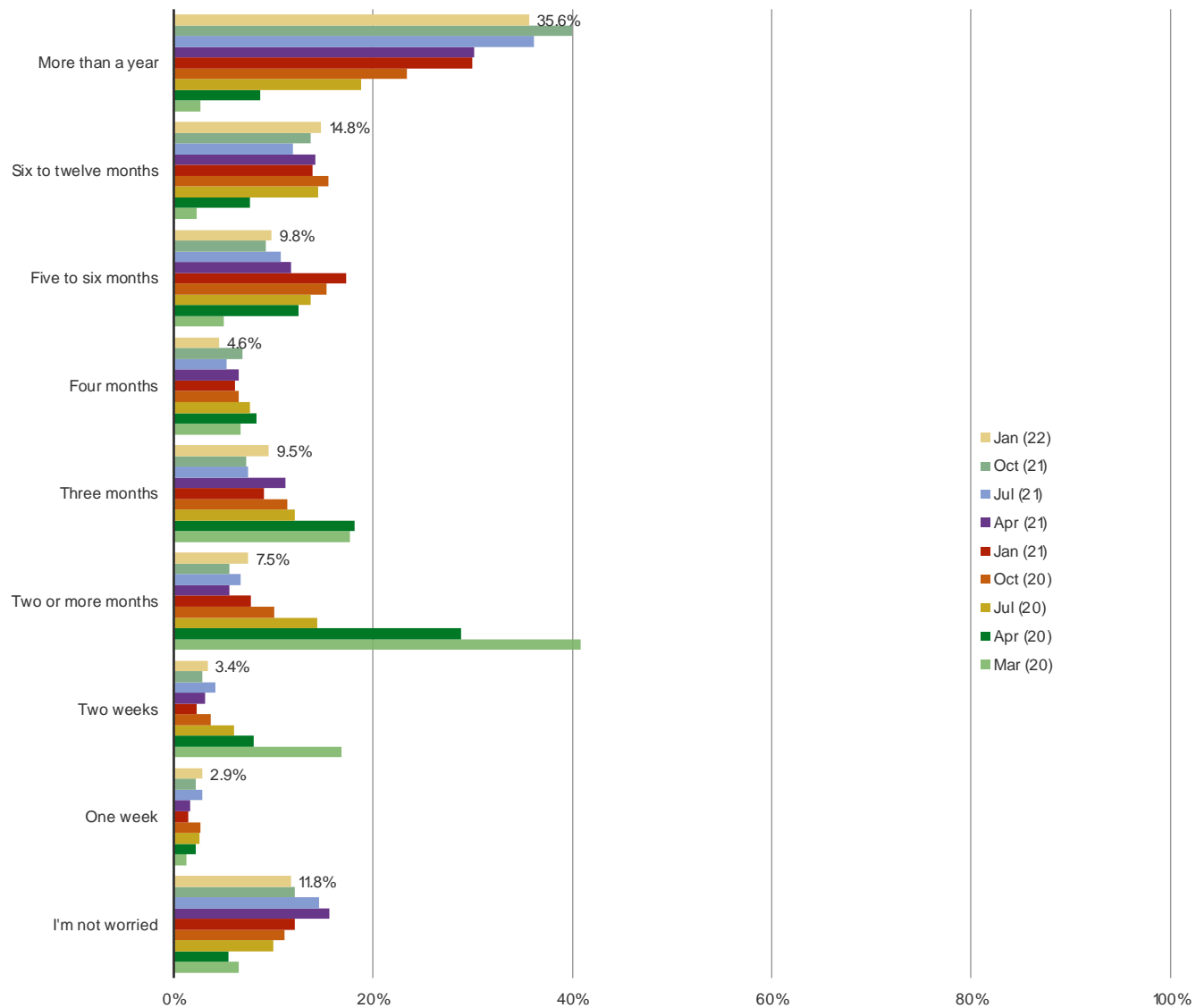
In the past three months, have you had any of the following conditions? (Select ALL)

ALL RESPONDENTS



For how much longer do you expect the coronavirus to be a concern?

ALL RESPONDENTS

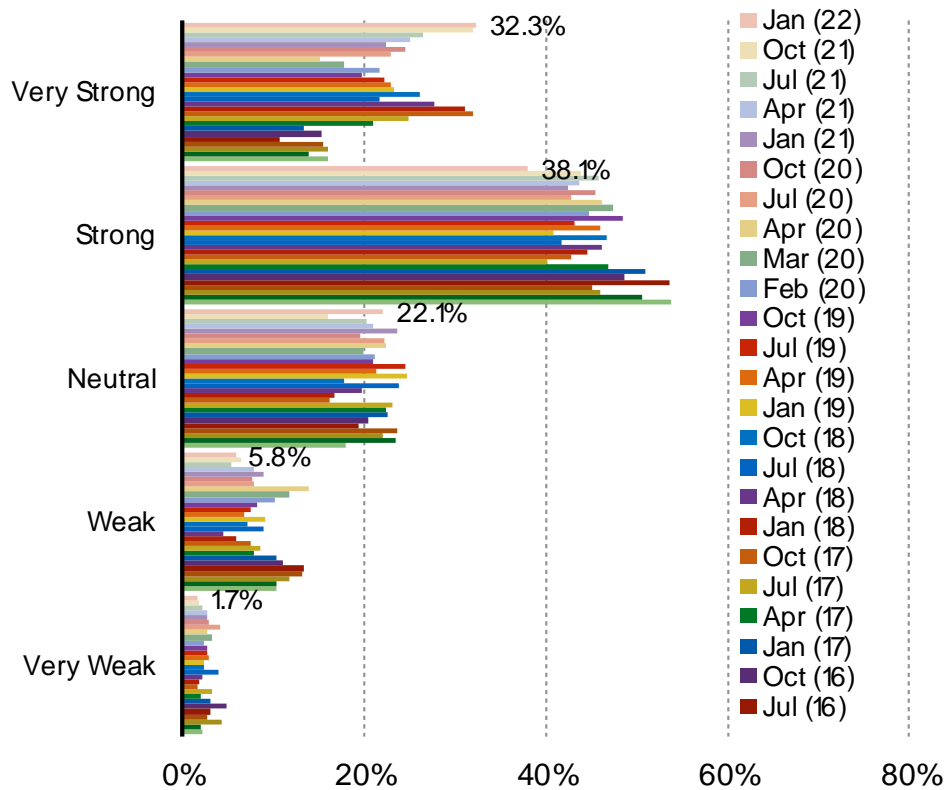


II

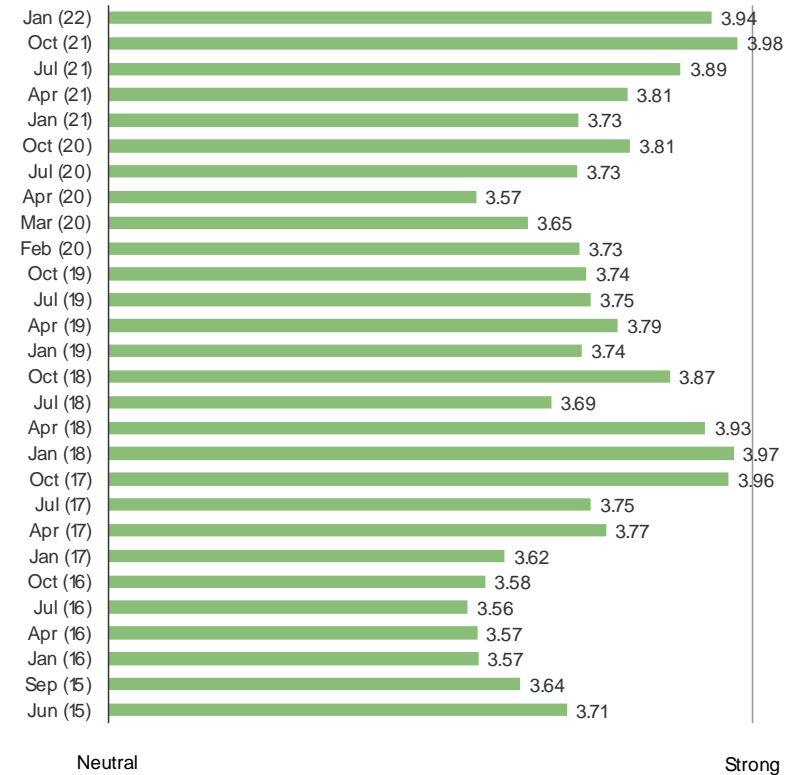
- ❑ **Covid Concerns Steady Q/Q**
- ❑ **Household Incomes and Spending Show Improvement**
- ❑ **Sentiment related to US / China Relations Improves Sequentially**
- ❑ **Food Delivery App Use Moves Modestly Higher**

How confident do you currently feel about spending money?

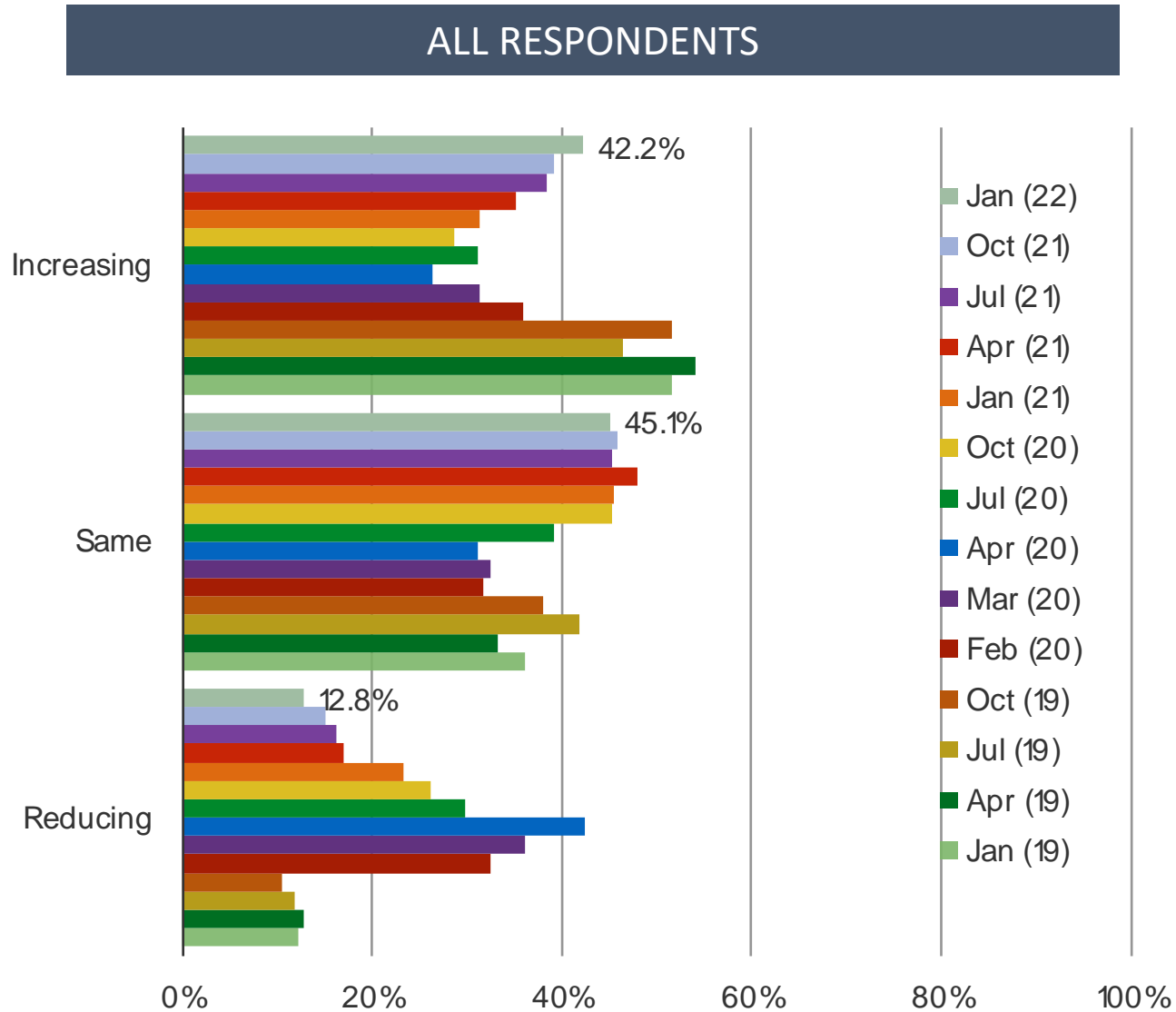
ALL RESPONDENTS



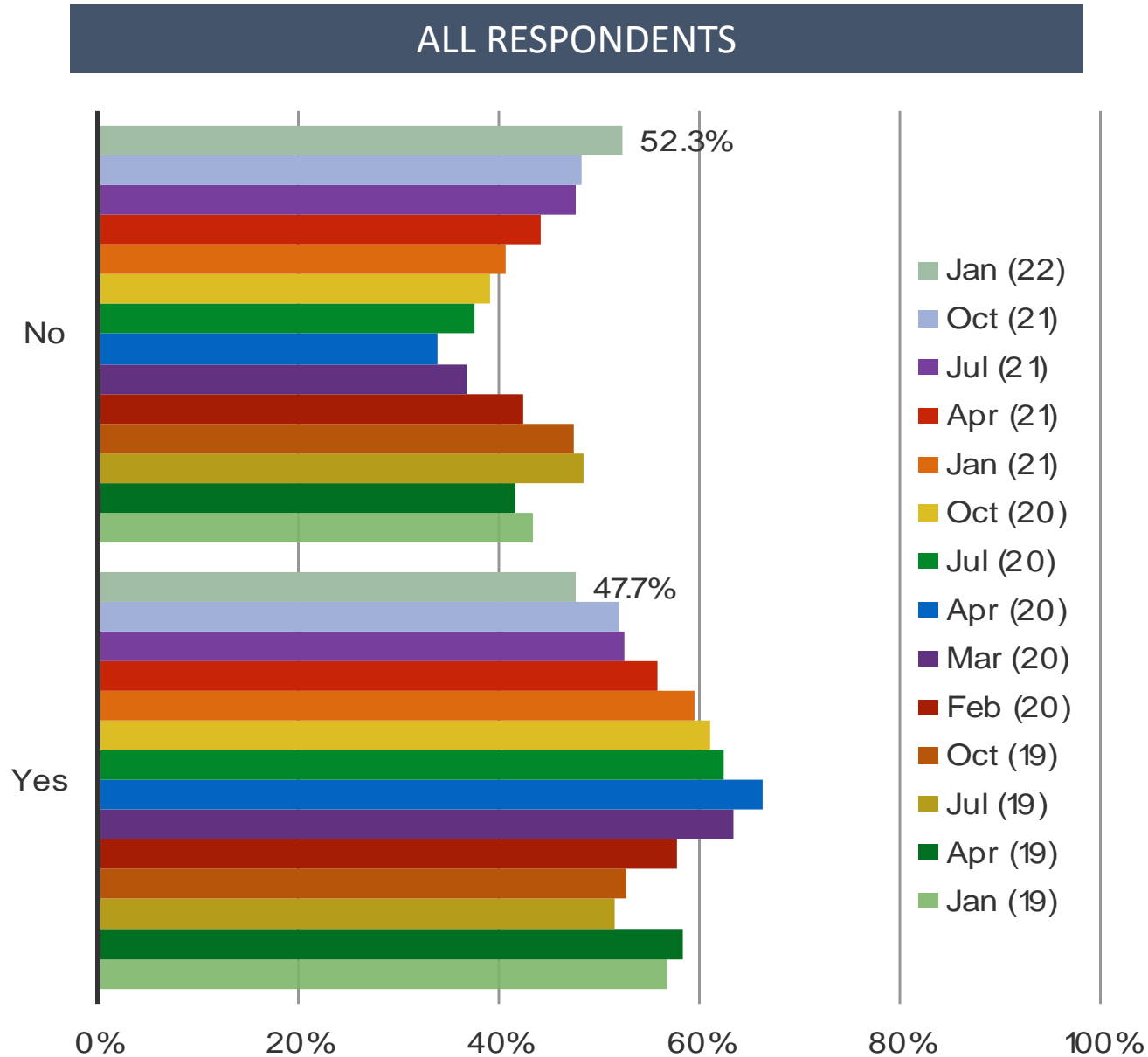
WEIGHTED AVERAGE



How much have you been spending recently?

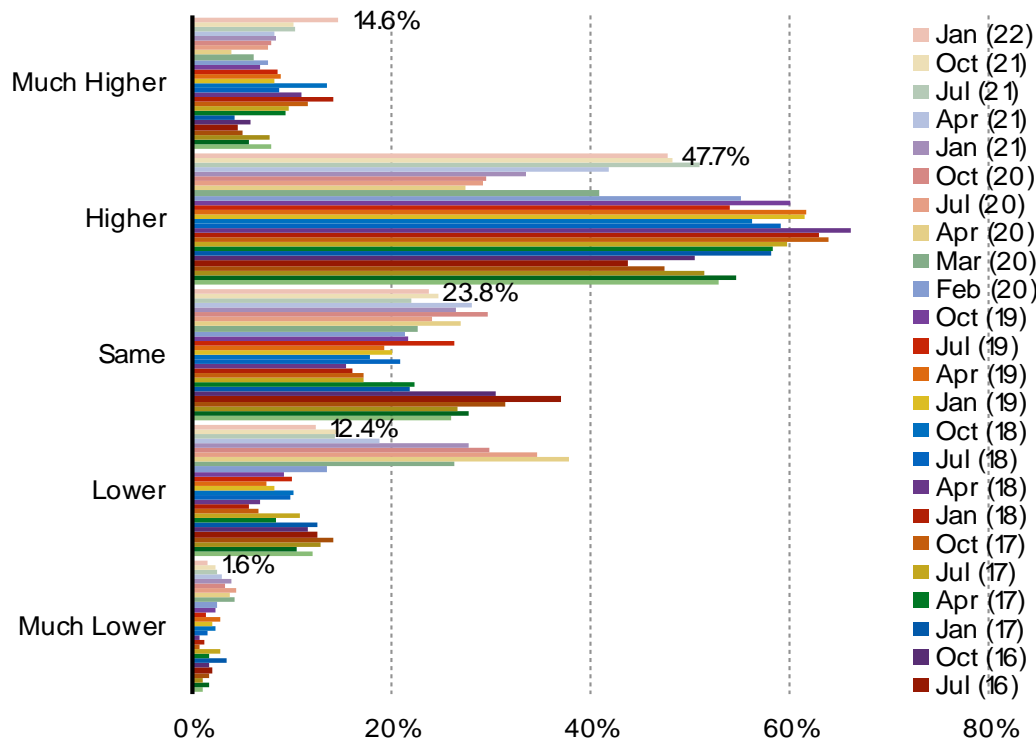


Do you want to reduce spending now?

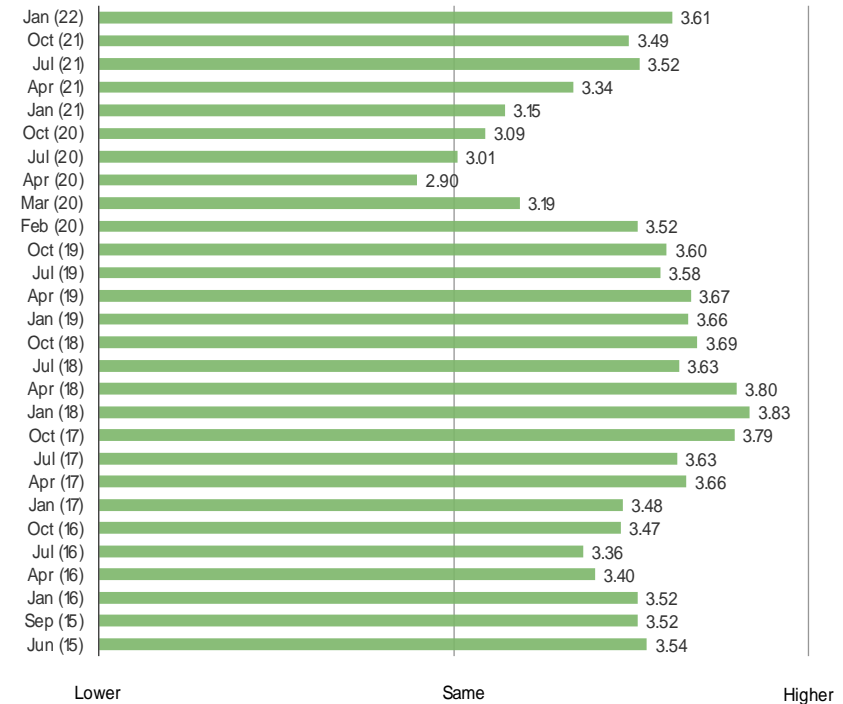


How does your household income compare to last year?

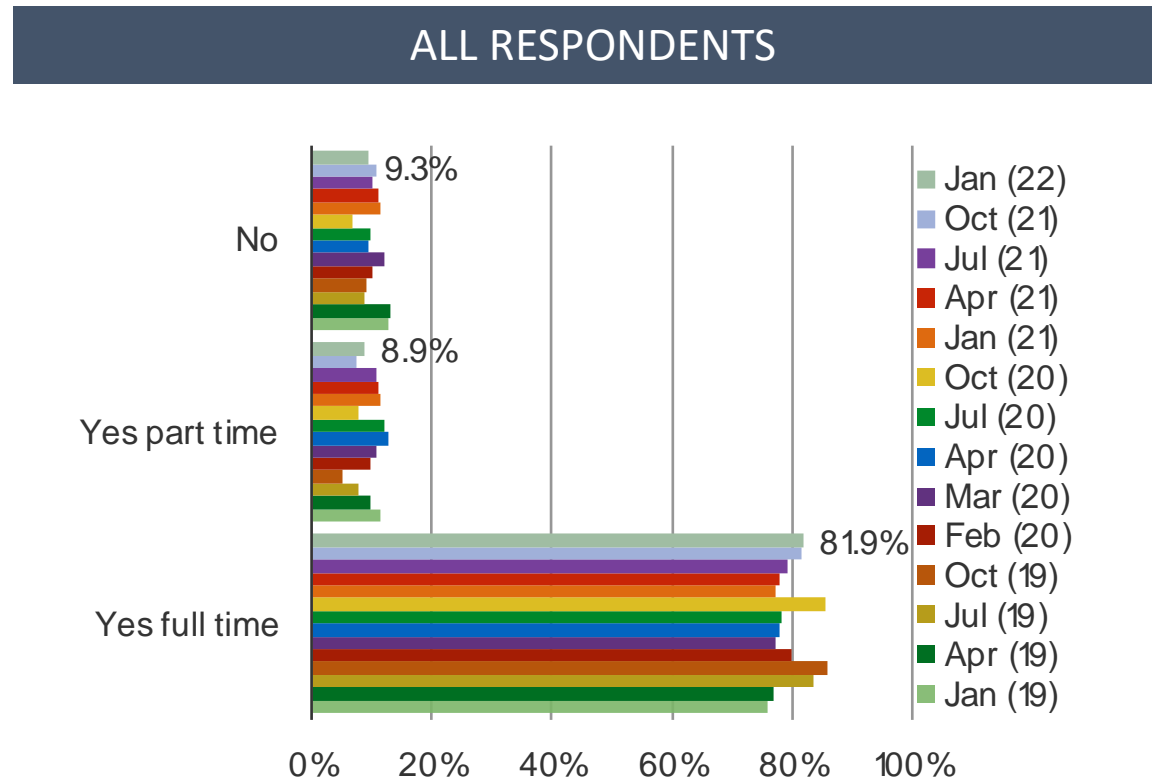
ALL RESPONDENTS



WEIGHTED AVERAGE

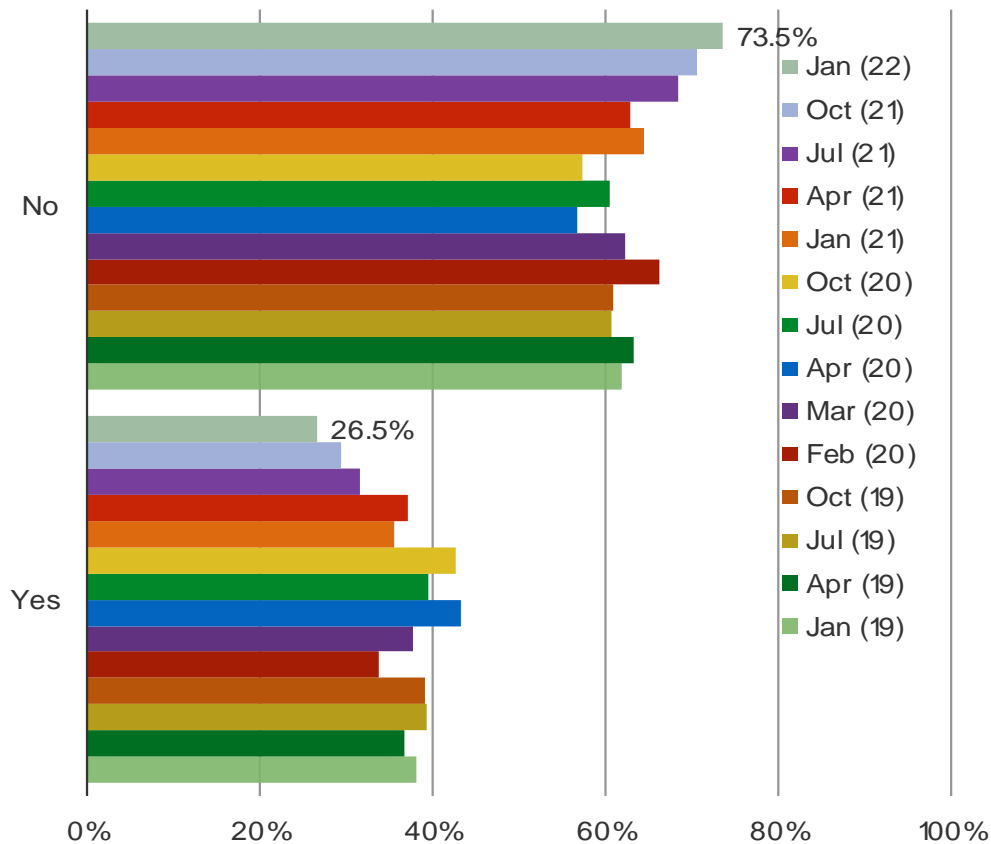


Do you have a job now?

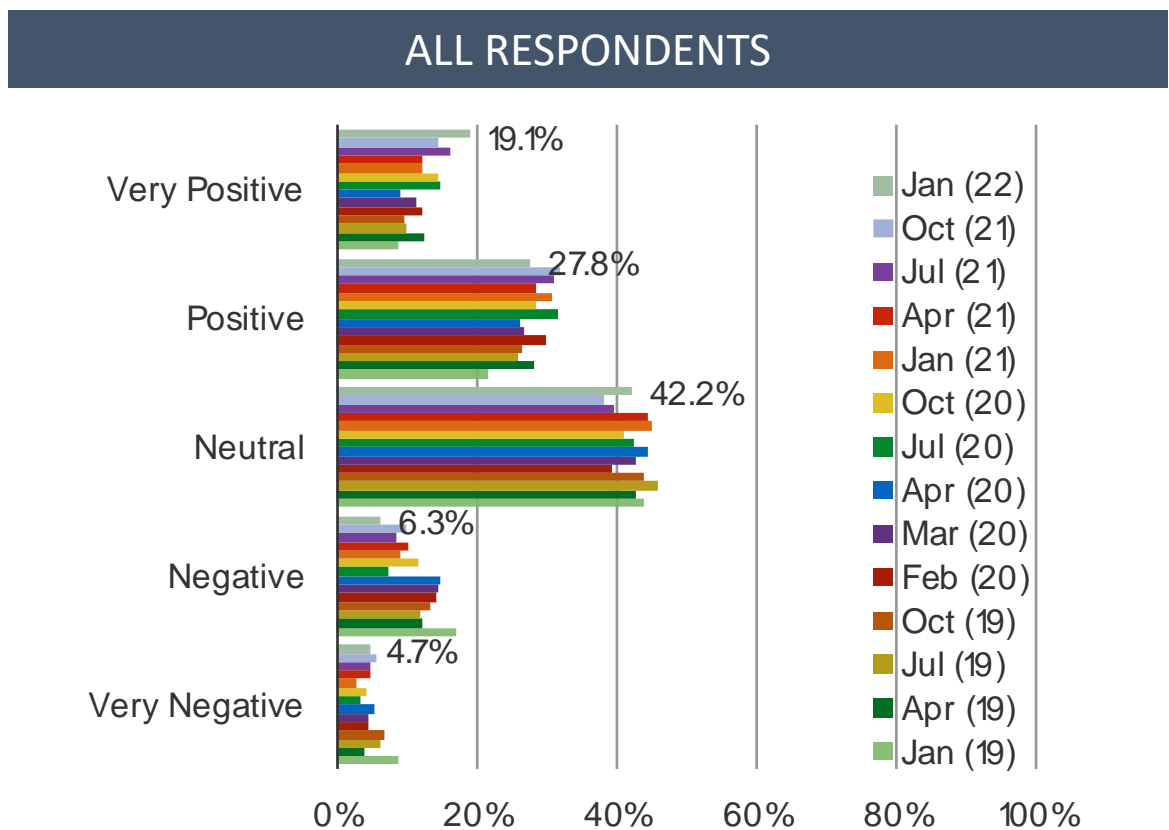


Are you worried that you will lose your job?

POSED TO RESPONDENTS WHO HAVE A JOB



What do you think of the Chinese stock market?

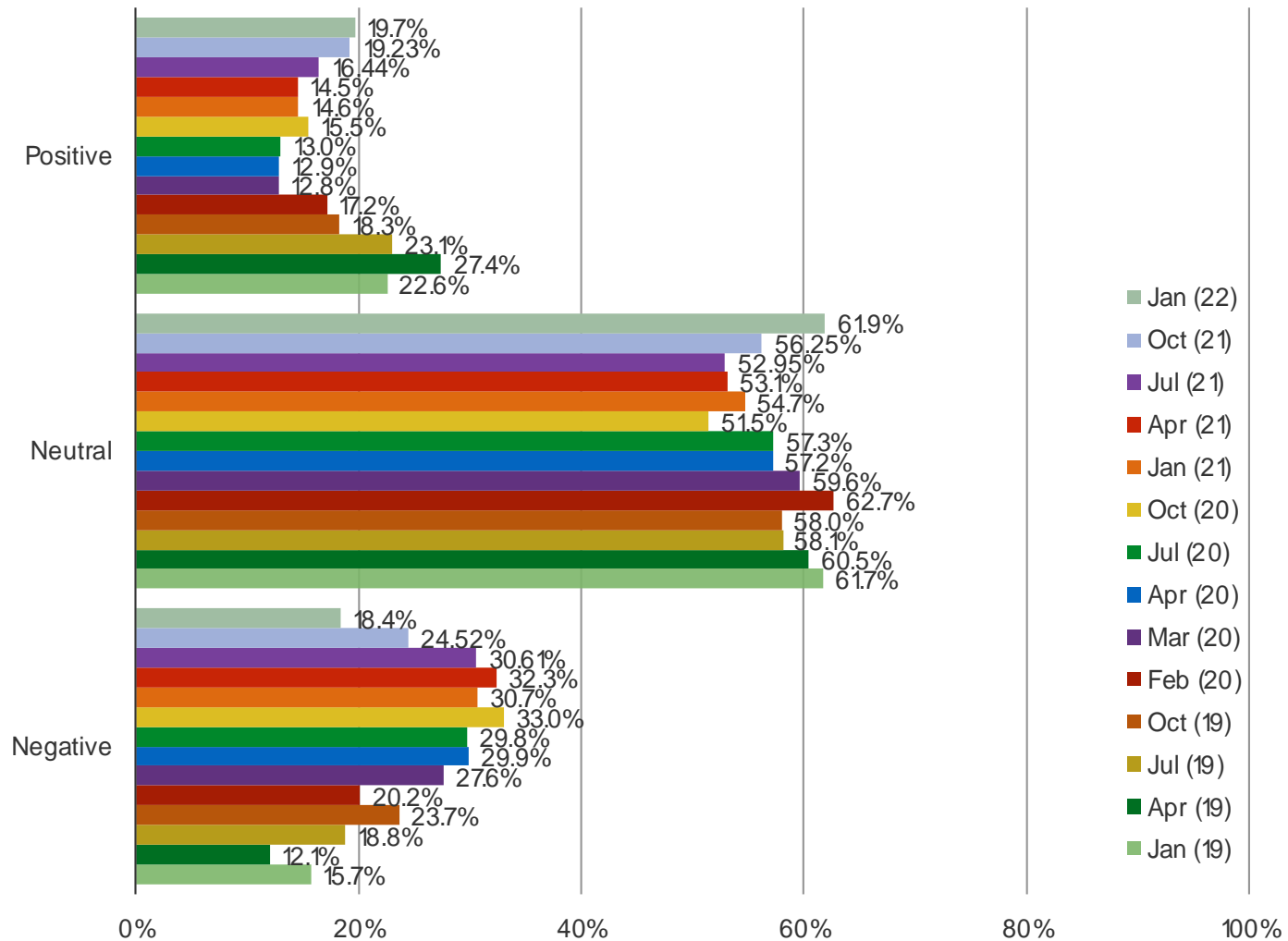


III

- ❑ **Covid Concerns Steady Q/Q**
- ❑ **Household Incomes and Spending Show Improvement**
- ❑ **Sentiment related to US / China Relations Improves Sequentially**
- ❑ **Food Delivery App Use Moves Modestly Higher**

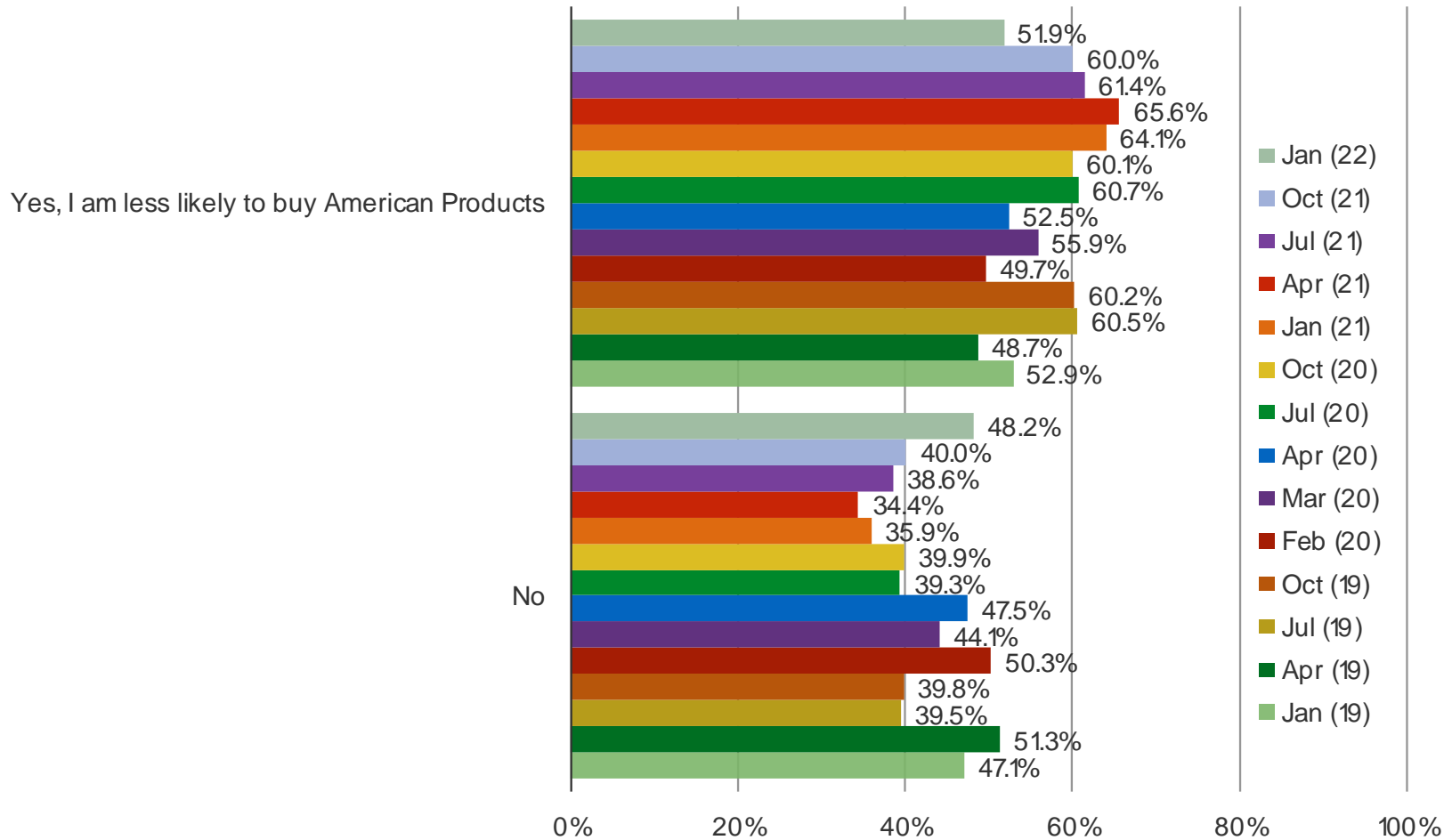
What do you think of the relationship between China and the US?

POSED TO ALL RESPONDENTS



Because of your view on the relationship between China and the United States, are you less likely to buy American products?

POSED TO RESPONDENTS WHO HAVE A NEGATIVE VIEW ON US CHINA RELATIONS

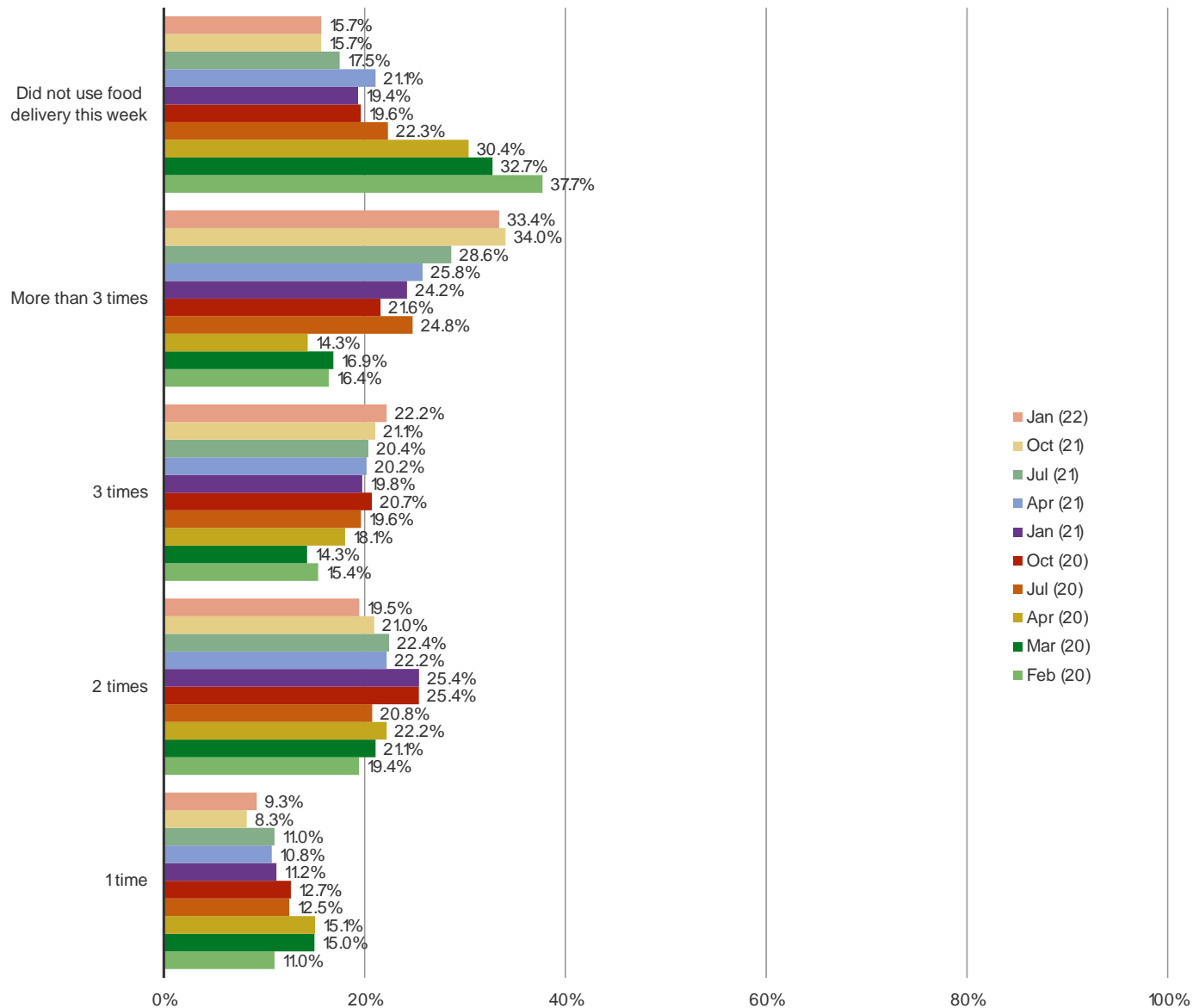


IV

- ❑ **Covid Concerns Steady Q/Q**
- ❑ **Household Incomes and Spending Show Improvement**
- ❑ **Sentiment related to US / China Relations Is More Neutral**
- ❑ **Food Delivery App Use Moves Modestly Higher**

How often did you order food delivery this week?

ALL RESPONDENTS



Do you plan to increase or decrease your spending on the following stores and apps?

ALL RESPONDENTS

